

Slovakian explosion-proof distribution box model



Overview

They're designed to meet two critical challenges: contain internal explosions and prevent external ignition sources from interacting with volatile atmospheres. But beyond compliance paperwork, what makes these solutions truly valuable?

Flameproof enclosure (Ex d IIB+H2), which can be used as feed distribution equipment in control and distribution system (such as distribution box, switch box of main circuit, control box, terminal box or motor starting box etc.)
·Enclosure: stainless steel. Equipped with specialized hinge. Safely conduct, connect and distribute energy in hazardous areas with R. Shell is made of high qualified steel plate or stainless steel plate welding forming, it is built-in many kinds of explosion-proof apparatus or their combination; eg :. Supermec ATEX Junction Box & Enclosures are designed to satisfy most of our clients' requirements for CONTROL explosion-proof and flameproof enclosures.

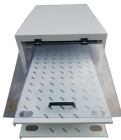
Slovakian explosion-proof distribution box model



We offer bespoke, custom-made terminal boxes and terminal box combinations, as well as standard products with short delivery times. Our products are certified for installation technologies all over the ...



Warom specializes in manufacturing explosion-proof electrical equipment, with products covering explosion-proof lighting fixtures, explosion-proof distribution boxes, explosion-proof control ...



·Equipped with specialized hinge structure, which can prevent the flameproof joints from damage when opening and closing the box, and greatly prolong the service life of box. The boxes can be combined ...



Distribution Boxes BXM (D)51 Series Explosion proof Distribution Boxes Lighting/Power (Ex d e IIB)
Distribution Boxes BXM (D)53 Explosion proof Distribution Boxes Lighting/Power (Ex d e IIC) ...



5. Two or multi-circuits entry can be converted, by hand or automatically; 6. According to the electric scheme and main technical parameters offered by user, select explosion-proof electrical equipments ...



CZ Electric Co., Ltd is an Explosion-proof isolation switch manufacturers and Explosion-proof safety switch, Explosion-proof circuit breaker (MCB) box factory.



Supermec ATEX-approved Junction Box & Explosion Proof, Flameproof Enclosures are designed to satisfy your requirements. Manufactured using the latest technologies.



Atex control stations, explosion protected control units and distribution boxes made stainless steel maritime grade AISI 316L or AISI 304L. Atex Delvalle provides a custom build facility for Hazardous ...



At the Magnus platform, stainless steel distribution boxes weren't just protecting against explosions - they were combatting constant saltwater corrosion. Engineers specified special low-nickel alloys to ...

Contact Us

For more information, pricing, or custom data center solutions, please contact us:

Website: <https://www.yoahorroenergia.es>

Email: hello@yoahorroenergia.es

Phone: +233 54 318 7269

Address: Plot 28, Spintex Road, Accra, Greater Accra, Ghana

This document is for informational purposes only. Specifications subject to change without notice.

