

Sino-European Bridge Structure Lighting



Overview

In this comprehensive guide, we delve into the essential considerations for designing and implementing bridge lighting initiatives, ensuring optimal results that captivate the senses and elevate the urban experience. Strategic Fixture Placement: As cities around the world embrace the transformative power of lighting, bridges become iconic canvases, waiting to come to life after dusk. Different bridge constructions such as girder bridges, cable bridges or historical arched bridges require their own lighting. Bridges serve as vital connections within cities and across regions, but they are more than functional structures. As urban planners, architects, and developers. The mission of the JRC is to provide customer-driven scientific and technical support for the conception, development, implementation and monitoring of EU policies. Bridge lighting is a distinct category that requires thorough planning. Due to their size and, moreover, their often exposed location, many of these structures are suitable for being effectively staged at night. Whether it's a dizzying height, an.

Sino-European Bridge Structure Lighting



Many regions have specific requirements for bridge lighting, including guidelines for light levels, glare control, and energy efficiency. Adhering to these standards helps ensure that the lighting system is ...



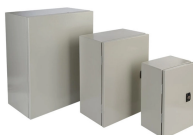
We show you which ERCO outdoor luminaires are suitable for the illumination of bridges and give you tips for perfect bridge lighting.



Bridge lighting is a distinct category that requires thorough planning. Our portfolio includes numerous architectural lighting concepts for bridges in various cities across Russia.



In this comprehensive guide, we'll explore all aspects of bridge lighting, from understanding the different lighting systems to planning and implementing a successful project.



The present JRC Report compiles all the technical papers prepared by the workshop lecturers resulting in the presentation of a bridge structure analyzed from the point of view of each Eurocode.



Through innovative lighting design and state-of-the-art luminaires, we help illuminate these iconic structures, transforming them into aspirational or functional icons and inspiration for ...



Bridges are usually illuminated permanently, i.e. from sunset to sunrise. Precisely because of this long period of use of the luminaires, economical lighting technology is of great importance. Our luminaires ...



Discover how bridge lighting design enhances safety, highlights architecture, and creates iconic nightscapes with Illus Lighting's sustainable, human-centered solutions.



Since 1998 Structurae has been providing bridge, civil and structural engineers with information on the design and construction of construction projects from around the world including profiles on the ...



As experts in innovative lighting solutions, Win-E Illumination is committed to crafting captivating bridge lighting projects that seamlessly blend functionality with artistic expression.

Contact Us

For more information, pricing, or custom data center solutions, please contact us:

Website: <https://www.yoahorroenergia.es>

Email: hello@yoahorroenergia.es

Phone: +233 54 318 7269

Address: Plot 28, Spintex Road, Accra, Greater Accra, Ghana

This document is for informational purposes only. Specifications subject to change without notice.

