

# Singapore Corrugated Catheter 800mm Depth Operation Guide



## Overview

This document provides an overview of the care and management of indwelling urethral and suprapubic catheters and intermittent urinary catheters, which are commonly used in clinical practice. They are underpinned by a wide array of considerations contextualized to Singapore, based on best available evidence at. What is a Urinary Catheter?

When Should I Consult My Doctor/Nurse?

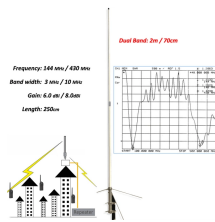
What is an indwelling or urinary catheter?

An indwelling urinary catheter is a narrow and flexible tube inserted into the bladder to drain urine. It allows continuous drainage of urine from the bladder into a urine collection bag. It is kept in place by an inflated balloon.

## Singapore Corrugated Catheter 800mm Depth Operation Guide



They are underpinned by a wide array of considerations contextualized to Singapore, based on best available evidence at the time of development. Each ACG is developed in collaboration with a ...



An indwelling urinary catheter is a narrow and flexible tube inserted into the bladder to drain urine. It allows continuous drainage of urine from the bladder into a urine collection bag.



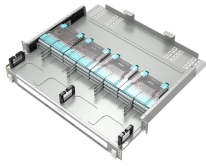
Central venous catheters (CVCs) are sized in French. French size and diameter are directly related, therefore a higher French size will allow for a greater flow rate.



Determine the proper length/depth to insert the new catheter: Mark the length of the existing catheter at the skin level where it exits; mark the corresponding length on the new replacement catheter to ...



The American Nurses Association (ANA) tool includes both an algorithm to help in deciding whether or not to insert a catheter, as well as a simple checklist to guide the insertion process.



What is a Urinary Catheter? When Should I Consult My Doctor/Nurse?



Urinary Catheterization Definition Is a process whereby a latex, polyurethane, or silicon tube known as a urinary catheter is inserted into a patient's bladder via the urethra.



This comprehensive guide will delve into the intricacies of IV cannula sizes, colors, flow rates, and usage, providing valuable insights for healthcare professionals and enthusiasts alike.



Care of Patient with Urinary Catheter What is a urinary catheter? lexible tube inserted into the bladder to drain out urine continuously. With this tube, you will not ave the urge to pass urine. It is kept in place ...



This article examines the Singapore medical market's actual needs in depth, analyzing iv cannula uses (intravenous catheter application scenarios), specification selection standards, pricing ...

## Contact Us

For more information, pricing, or custom data center solutions, please contact us:

Website: <https://www.yoahorroenergia.es>

Email: [hello@yoahorroenergia.es](mailto:hello@yoahorroenergia.es)

Phone: +233 54 318 7269

Address: Plot 28, Spintex Road, Accra, Greater Accra, Ghana

This document is for informational purposes only. Specifications subject to change without notice.

