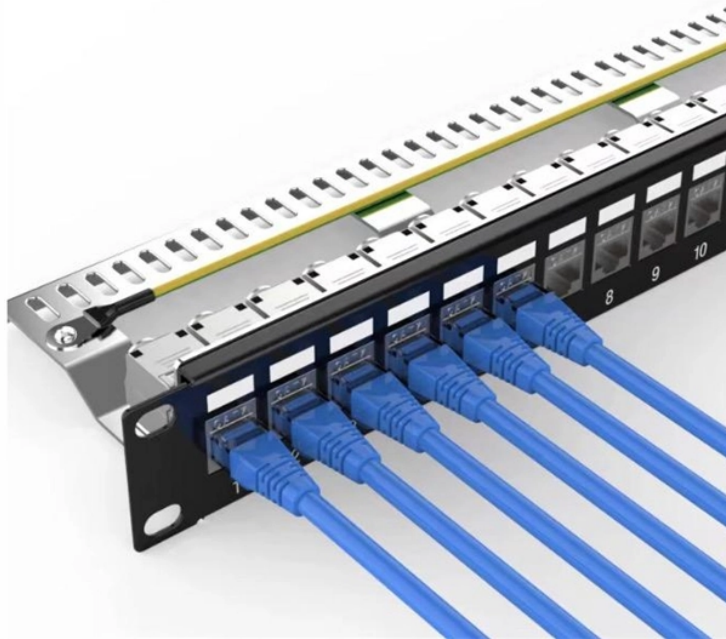


Should cable trays be used as seismic supports



Should cable trays be used as seismic supports



Pre-approved manufacturer's/industry manuals used for installation of conduit supports are required to be on the job site to ensure the correct details are being used.



Strap cables, either individually or in bundles, to the cable tray at a spacing equal to one half the support spacing to spread the seismic loads evenly to all restraint points.



Review of typical conduit and cable tray support systems in the earthquake experience and shake table test data base indicates that many overhead mounted support types are inherently ductile for lateral ...



The design concept used for the seismic bracing of the cable trays relied on a number of different structural elements of the lateral load path. The cable trays were treated as flexible bending elements ...



The proposed performance index (drift ratio between adjacent supports) for cable tray systems is a reasonable criterion for performance-based seismic design and is much more practical ...



This appendix provides the design criteria for seismic Category I cable trays and their supports. Seismic Category II cable trays and their supports are also designed utilizing the design criteria of this appendix.



This article will explore the importance of seismic resistance in cable trays, discuss when seismic braces are necessary, and help you understand how to make informed decisions for your ...



The most important lesson for seismic cable tray design is simple: do not treat seismic performance as an accessory. It is a core design requirement for nonstructural electrical systems in ...



Our team of experts can help you select the best cable tray series for your application, as well as designing your seismic bracing layout to ensure it meets applicable building codes and standards.



By carefully considering the material selection, component sizing, connection details, dynamic response, installation, and support, we can design cable tray systems that can withstand seismic events and ...

Contact Us

For more information, pricing, or custom data center solutions, please contact us:

Website: <https://www.yoahorroenergia.es>

Email: hello@yoahorroenergia.es

Phone: +233 54 318 7269

Address: Plot 28, Spintex Road, Accra, Greater Accra, Ghana

This document is for informational purposes only. Specifications subject to change without notice.

