

Short-distance fiber optic single-mode and dual-mode



Overview

Single-mode optical modules are best for long distances and fast speeds. This guide breaks down these two critical dimensions of optical transceiver design to help. In the complex landscape of fiber optic infrastructure, selecting the right cable type—single-mode (OS1/OS2) or multimode (OM1/OM2/OM3/OM4/OM5)—can define a network's speed, reach, and cost-effectiveness. This guide dissects their technical nuances, evolution, and real-world applications. In modern enterprise, data center, telecom, and industrial networks, SFP optical transceivers remain one of the most important components for connecting switches, aggregation routers, Wi-Fi 6E/7 APs, and edge infrastructure. I speak from the vantage of an IT director who must align procurement with budget ceilings, ROI expectations, and a governance framework.

Short-distance fiber optic single-mode and dual-mode



There are two main types of fiber optic cables: single mode and multimode. Although they can do the same job in some instances, the different construction methods make each of them better ...



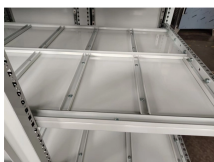
In controlled environments, such as a data center with clean fiber channels, multi-mode can deliver impressive bandwidth at short distances using modern transceivers. However, the ...



Learn all about the differences between single mode and multimode cables, as well as the various fiber wavelengths and standard core sizes used in fiber optics.



1. Introduction: The Fiber Optic Divide Fiber optic cables are categorized by how they transmit light: Single-mode (OS1/OS2): Guides light in a single, straight path through a tiny 9µm core, enabling ...



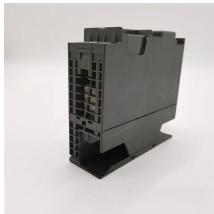
A guide to single-mode vs multimode SFP modules. Covers fiber types, wavelengths, distances, BiDi, CWDM/DWDM, SMF vs MMF selection, and application scenarios.



Confused about single mode vs multimode fiber? We compare core size, bandwidth, distance, and system costs to help you choose the right cable.



Master fiber optic technology: A deep dive into Single-Mode vs. Multi-Mode, OM1/OS ratings, distance ranges, and best practices.



Whether you're designing a short-range data center network or a long-distance metro backbone, understanding the distinctions between single vs. dual fiber and single-mode vs. multi ...



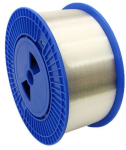
Whether you're designing a short-range data center network or a long-distance metro backbone, understanding the distinctions between single vs. dual ...



The definitive guide to fiber modes. See how core size determines light path, bandwidth, distance limits, and cost in modern optics.



Confused about single mode vs multimode fiber? We compare core size, bandwidth, distance, and system costs to help you choose the right cable.



Learn how fiber optic transmission distance varies between single mode vs. multimode fiber. Discover key factors affecting fiber distance, bandwidth, and cost to choose the right fiber for ...

Contact Us

For more information, pricing, or custom data center solutions, please contact us:

Website: <https://www.yoahorroenergia.es>

Email: hello@yoahorroenergia.es

Phone: +233 54 318 7269

Address: Plot 28, Spintex Road, Accra, Greater Accra, Ghana

This document is for informational purposes only. Specifications subject to change without notice.

