

Shangcang Cable Tray



Shangcang Cable Tray



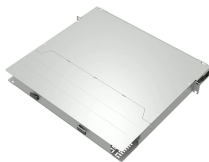
It is a company engaged in the design and production of sheet metal technology, cable trays and other metal products. Our company was established in 2020 and is located in Shuangfeng Town, Taicang ...



Chalfant's Series 6 single center support tray allows cable to be loaded from either side reducing labor cost. Louvered openings make it ideal for voice/data, telecommunications, control, secondary power ...



Shandong Hongfeng Electrical Group Co., Ltd. is a professional cable tray manufacturer in China, committed to providing a variety of solutions for cable tray support systems.



Design engineers or buyers might want to check out various Cable Trays factory & manufacturers, who offer lots of related choices such as cable tray, wire mesh cable tray and galvanized cable tray.



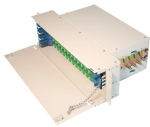
Our signature cable tray system, Snap Track channel tray, which requires fewer supports and less labor to install, saves on total installed costs.



Choose from our selection of cable trays, including over 850 products in a wide range of styles and sizes. Same and Next Day Delivery.



Our high quality products include cable trunking, cable ladder, perforated cable tray, wire mesh cable tray, the matching accessories and switchgear cabinet, etc.



Shanghai Besca Industrial Co.,Ltd is China's professional cable tray manufacturer and is dedicated to provide cable support system solutions. Founded in 1996, Besca has obtained certifications including ...



Main products Cable Tray, Unistrut Channel & Fittings (For Sales) and 746 more Products from Shanghai Xiaokai Building Material Co., Ltd. on Alibaba

Contact Us

For more information, pricing, or custom data center solutions, please contact us:

Website: <https://www.yoahorroenergia.es>

Email: hello@yoahorroenergia.es

Phone: +233 54 318 7269

Address: Plot 28, Spintex Road, Accra, Greater Accra, Ghana

This document is for informational purposes only. Specifications subject to change without notice.

