

## Sei cable tray standard

### Pre-Terminated Patch Panel



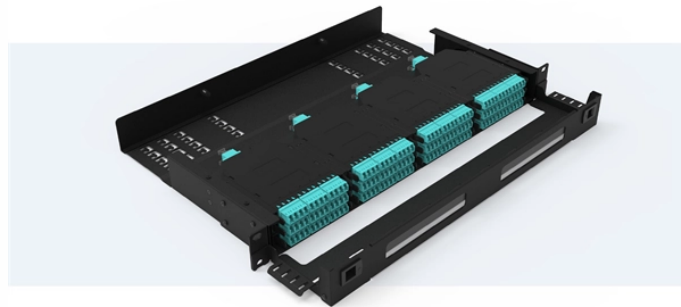
Standard 19" width



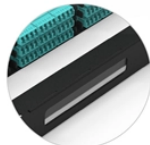
Max 144 fibers in 1U



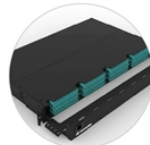
MPO/Fusion Dual-Purpose



Removable Cable Management Tray



Transparent Front Cover



High-Quality Matte Coated Steel



## Sei cable tray standard



For proper installation, design, and maintenance, adherence to international standards is essential. One of the most recognized frameworks globally is the IEC standard for cable tray ...



IEEE 576 - This standard describes recommended practice for installation, termination and testing of insulated power cables in cable trays used in industrial and commercial applications.








This document specifies requirements and tests for cable tray systems and cable ladder systems intended for the support and accommodation of cables and possibly other electrical equipment in ...



APPENDIX 3F CABLE TRAYS AND CABLE TRAY SUPPORTS This appendix provides the design criteria for seismic Category I cable trays and their supports. Seismic Category II cable trays and ...



Fabricated in numerous styles (wiremesh, ladder, ventilated trough, channel, and solid-bottom) and sizes, cable tray provides the greatest versatility among cable support systems, while offering ...

	<p>PART I - GENERAL 1.01 SECTION INCLUDES A. The work covered under this section consists of the furnishing of all necessary labor, supervision, materials, equipment, tests and services to install ...</p>
	<p>Cable tray length is selected based on the load to be supported, the distance between the supports (also referred to as the span), and handling and installation constraints.</p>
	<p>NEMA VE 1-2017 Specifies requirements for metal cable trays and associated fittings designed for use in accordance with the rules of Canadian Electrical Code, Part I and the National Electrical Code®</p>
	<p>The Ladder Tray features light, rugged, tubular steel construction. It is designed for mechanical support and strain relief in long runs of cable and creates a smooth gradual bend for cable. Rail and stringer ...</p>
	<p>The work shall include materials, equipment and apparatus not specifically mentioned herein or noted on the plans but which are necessary to make a complete working ANSI/TIA/EIA and ISO/IEC compliant ...</p>

## Contact Us

For more information, pricing, or custom data center solutions, please contact us:

Website: <https://www.yoahorroenergia.es>

Email: [hello@yoahorroenergia.es](mailto:hello@yoahorroenergia.es)

Phone: +233 54 318 7269

Address: Plot 28, Spintex Road, Accra, Greater Accra, Ghana

This document is for informational purposes only. Specifications subject to change without notice.

