

## SC fiber optic fast connector single-mode or multi-mode



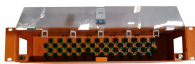
## SC fiber optic fast connector single-mode or multi-mode



This article covers choosing between single-mode and multi-mode optical fiber for Small Form-factor Pluggable (SFP) links, including practical guidance, workflows, and reliability ...



Learn the differences between ST, SC, FC, and LC fiber connectors. Explore connector types, PC/UPC/APC polish, single-mode vs multi-mode ...



Learn the differences between ST, SC, FC, and LC fiber connectors. Explore connector types, PC/UPC/APC polish, single-mode vs multi-mode applications.



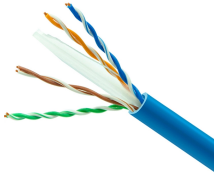
Whether you're setting up a data center or expanding FTTH services, SC connectors support both single-mode and multimode fibers. This flexibility makes them ideal for various network setups.



Proven mechanical splice technology ensuring precision fiber ...



Learn everything about SC/APC fiber fast connectors: cold vs hot fusion, single-mode vs multi-mode, and which connector to choose for your FTTH project.



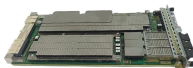
Yes, the SC Connector is available in both single-mode and multi-mode configurations. The SC features a square shape, a 2.5mm ferrule compatible with FC and ST via hybrid adapters, ...



The most commonly used fiber optic connectors are LC and SC connectors due to their reliability, ease of use, and compatibility with both single-mode and multimode fiber optic cables.



SC refers to a type of fiber optic connector and can be used for both single-mode and multimode fiber optic cables. The SC connector itself does not specify whether it is single-mode or multimode, as it is ...



SC Fiber Optic Connectors: Guide to UPC/APC, Singlemode/Multimode. Choose, install & test for MRO/OEM needs.



Connector types do not inherently differ between single-mode and multimode SFP modules—the same connector can be used for both fiber types. What changes between single-mode and multimode ...



Proven mechanical splice technology ensuring precision fiber alignment, a factory pre-cleaved fiber stub and a proprietary index-matching gel combine to offer an immediate low loss ...

## Contact Us

For more information, pricing, or custom data center solutions, please contact us:

Website: <https://www.yoahorroenergia.es>

Email: [hello@yoahorroenergia.es](mailto:hello@yoahorroenergia.es)

Phone: +233 54 318 7269

Address: Plot 28, Spintex Road, Accra, Greater Accra, Ghana

This document is for informational purposes only. Specifications subject to change without notice.

