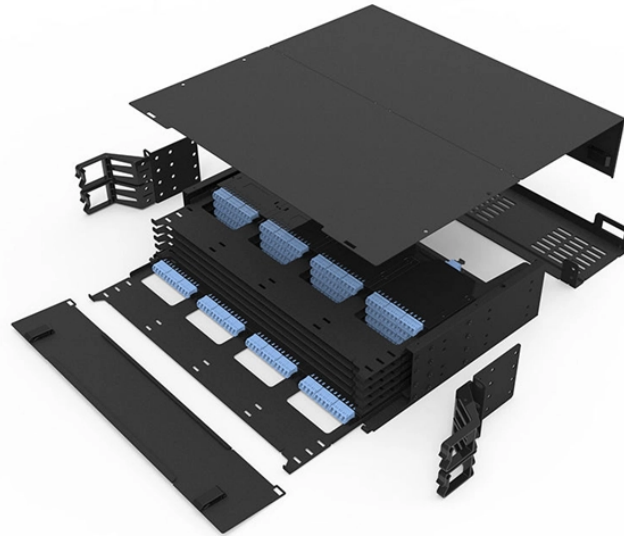


SC APC Fiber Optic Connector G 652D



SC APC Fiber Optic Connector G 652D



We supply the single mode 9/125 SC fiber optic pigtail cables in G652D, G657A1, G657A2, G655 or customized fiber. The cable jacket can be easy strip or tight buffer or semi-tight.



Explore the differences between G.652.D, G.657.A1, and G.657.A2 fiber optic cable specifications. Learn about their unique characteristics, bend performance, and applications to make ...



Reviews (0) Write a review Fiber Optic Pigtails
Connector Type: SC/APC, G.652D 9/125, Ø 2.0mm,
3 \$ Add to Wishlist



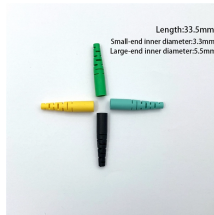
All images placed on Atel Electronic's web sites may slightly vary from real look of current selling products. If you have any doubts regarding information on this website please contact us (phone +48 ...



Pigtail fiber G.657A2 is the most common type of installed fiber optimized for transmission at the wavelength of 1310 nm, and a transmission wavelength of 1550 nm. All packed in blister together ...



This specification defines the characteristics of the SC/APC Field Installable Connector (FIC Type LC52) using G652D/G657A1/G657A2 fiber in a pre-polished SC/APC ferrule.



Easy installation and handling on high speed fiber optical transmission networks. LSZH - Outside fireproof cable sheath, which the fire does not emit harmful gases.



It has the advantages of stable transmission, high reliability and customization; it is widely used in optical network scenarios such as central office, FTTX and LAN etc.




Professional-grade fiber optic pigtails built for telecom, FTTH, and data center deployment. Options include single mode G.652.D/G.657.A1/A2 and multimode OM1, LC/SC/ST ...



Singlemode G652D fiber optic pigtail is with low water peak fiber which provides expanded transmission window from 1310nm to 1550nm continuously for long distance transmission with features of low ...



Professional-grade fiber optic pigtails built for telecom, FTTH, and data center deployment. Options include single mode G.652.D/G.657.A1/A2 and ...

<p>An Extensive Library of Self-Developed Products</p>  <p>Optical Distribution Panels Rack Mount Fiber Patch Panels Stand Network Cabinet</p> <p>Fiber Optic Distribution Boxes Fiber Adapters Copper Cable Patch Panels Fiber Patch Cords</p>	<p>This specification defines the characteristics of the SC/APC Field Installable Connector (FIC Type LC52) using G652D/G657A1/G657A2 fiber in a ...</p>
--	--

Contact Us

For more information, pricing, or custom data center solutions, please contact us:

Website: <https://www.yoahorroenergia.es>

Email: hello@yoahorroenergia.es

Phone: +233 54 318 7269

Address: Plot 28, Spintex Road, Accra, Greater Accra, Ghana

This document is for informational purposes only. Specifications subject to change without notice.

