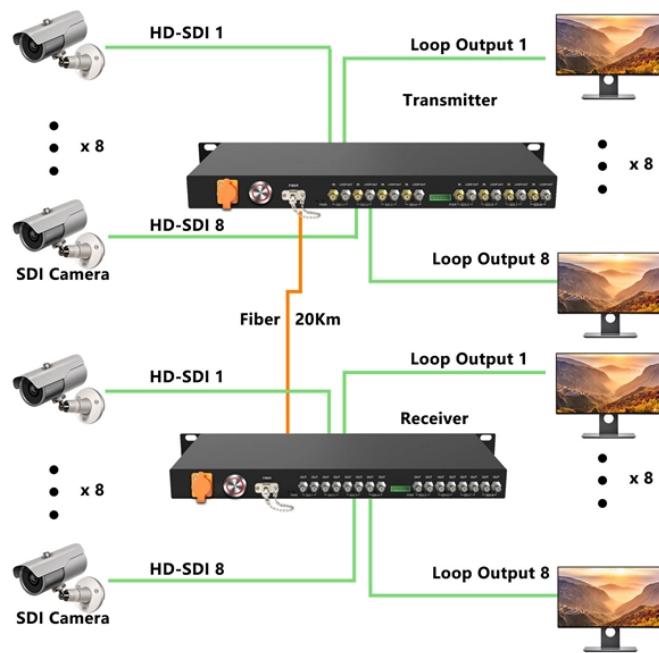


## Rwanda Trade Complete Distribution Box



## Rwanda Trade Complete Distribution Box



The result of your commodity-specific query in the trade information portal (TIP) leads to a search results page that explains where to start, where to go next, and what will be the final output.



We are a Rwandan-based logistics and transportation company dedicated to delivering professional, reliable, and efficient trade and transport solutions. Whether it's moving goods across town or across ...



Our operations in Rwanda bring every part of your supply chain into one connected system. By integrating port services, transport links, warehousing, and nationwide distribution, we help your ...



Regardless of your industry, commodity, or markets, we have services that help you grow. Our operations in Rwanda bring together local coordination hubs, off-dock support facilities, inland ...



Comprehensive analysis of your distribution requirements including product types, volumes, origins, destinations, and delivery timelines. Strategic route and transport mode optimization with inventory ...



From Single Packages to Full Warehouse Distribution Choose the service that fits your needs. All backed by 1,000+ trucks (any number available), real-time tracking, and pickup in under 1 hour.



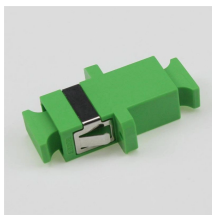
Discusses distribution network from how products enter to final destination, including reliability of distribution systems, distribution centers, ports, etc.



It provides a comprehensive, single-point access to user-centric information needed to trade in and out of Rwanda: at its core, a database of procedures provides step-by-step guides to imports, exports ...



Comprehensive supply solutions for ships and yachts. Salvo Grima Rwanda is the national distributor for 10 multinational manufacturers across Rwanda, running more than ten logistics hubs, employing 106 ...



The Rwanda Trade Portal is managed by the Rwanda Revenue Authority (RRA) under the auspices of the National Trade Facilitation Committee (NTFC) and in close collaboration with the Ministry of ...

Establishing An OfficeFranchisingDirect MarketingJoint Ventures/LicensingExpress DeliveryDue DiligenceMarketing is conducted primarily through word-of-mouth, radio, mobile phone ads, printed journals, and outdoor campaigns. The internet, social media, and mobile phones are emerging as particularly important marketing media. The Rwandan postal system is insufficiently developed to support large-scale direct marketing. See more on trade.gov .b\_imgcap\_alttitle p strong,.b\_imgcap\_alttitle .b\_factrow strong{color:#767676}#b\_results .b\_imgcap\_alttitle{line-height:22px}.b\_imgcap\_alttitle{display:flex;flex-direction:row-reverse;gap:var(--mai-smtc-padding-card-nested-default)}.b\_imgcap\_alttitle .b\_imgcap\_img{flex-shrink:0;display:flex;flex-direction:column}.b\_imgcap\_alttitle .b\_imgcap\_main{min-width:0;flex:1}.b\_imgcap\_alttitle .b\_imgcap\_img>div,.b\_imgcap\_alttitle .b\_imgcap\_img a{display:flex}.b\_imgcap\_alttitle .b\_imgcap\_img img{border-radius:var(--mai-smtc-corner-card-default)}.b\_hList img{display:block}.b\_imagePair ner img{display:block;border-radius:6px}.b\_algo .vttv2 img{border-radius:0}.b\_hList .cico{margin-bottom:10px}.b\_title .b\_imagePair> ner,.b\_vList>li>.b\_imagePair> ner,.b\_hList .b\_imagePair> ner,.b\_vPanel>div>.b\_imagePair> ner,.b\_gridList .b\_imagePair> ner,.b\_caption .b\_imagePair> ner,.b\_imagePair> ner>.b\_footnote,.b\_poleContent .b\_imagePair> ner{padding-bottom:0}.b\_imagePair> ner{padding-bottom:10px;float:left}.b\_imagePair.reverse> ner{float:right}.b\_imagePair .b\_imagePair:last-child:after{clear:none}.b\_algo .b\_title .b\_imagePair{display:block}.b\_imagePair.b\_cTxtWithImg>\*{vertical-align:middle;display:inline-block}.b\_imagePair.b\_cTxtWithImg> ner{float:none;padding-right:10px}.b\_imagePair.square\_s> ner{width:50px}.b\_imagePair.square\_s{padding-left:60px}.b\_imagePair.square\_s> ner{margin:2px 0 0 -60px}.b\_imagePair.square\_s.reverse{padding-left:0;padding-right:60px}.b\_imagePair.square\_s.reverse> ner{margin:2px -60px 0 0}.b\_ci\_image\_overlay:hover{cursor:pointer} sightsOverlay,#OverlayIframe.b\_mcOverlay sightsOverlay{position:fixed;top:5%;left:5%;bottom:5%;right:5%;width:90%;height:90%;border:0;border-radius:15px;margin:0;padding:0;overflow:hidden;z-index:9;display:none}#OverlayMask,#OverlayMask.b\_mcOverlay{z-index:8;background-color:#000;opacity:.6;position:fixed;top:0;left:0;width:100%;height:100%}p>.news\_dt{color:#767676}DP World

## Contact Us

For more information, pricing, or custom data center solutions, please contact us:

Website: <https://www.yoahorroenergia.es>

Email: [hello@yoahorroenergia.es](mailto:hello@yoahorroenergia.es)

Phone: +233 54 318 7269

Address: Plot 28, Spintex Road, Accra, Greater Accra, Ghana

This document is for informational purposes only. Specifications subject to change without notice.

