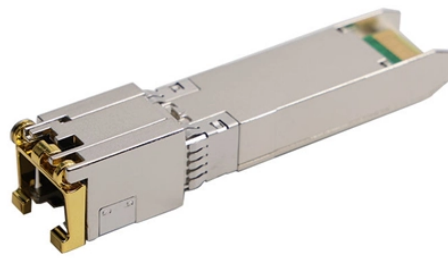


Russian Integrated Cable Tray Seismic Support



Overview

This study aims to develop a simple yet efficient performance-based design optimization methodology for cable tray systems in building structures. In the paper, the drift ratio between adjacent supports is



Russian Integrated Cable Tray Seismic Support



A improved design is convenient for expansion.
The design of these trays saves space and allows for easy installation.

These products are designed to carry heavier cable loads compared to the standard perforated cable trays >> Thanks to its special quality, it is the most suitable solution for using in environments ...



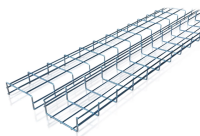
The large selection of materials and surface finishes means they can be used in a variety of ways, both indoors and outdoors. Cable trays are an integrated, highly flexible cable support system when used ...



Seismic response of the cable trays and their supports are produced due to seismic excitation of the supports. These loads are usually not considered and trays are provided with expansion joints in ...



More particularly, it relates to a seismic device of a cable tray, a conduit tube, and a bus duct support that effectively absorbs shock or vibration caused by an earthquake.



The load capacity of the cable trays according to the support width can be read off in the diagram using load curves - here, shown as an example for a cable tray with the tray widths 100 to 600 mm.



As characterized by the long distributed, generally multi-span and large mass of cable tray system, it is more vulnerable to damage and even fall during earthquakes, which has been reported...



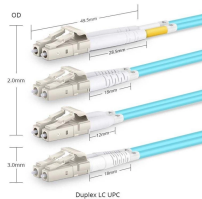
The post channels suffered local buckling during the earthquake, which caused the cable tray system to collapse. There was no reported loss of cable electrical function. The guidelines presented below ...



Cable Trays Cable tray is a system used to safely carry and protect electrical cables along pathways planned specifically for building and facility installations.



As with cable restraints, floor- or roof-mounted electrical distribution support systems will normally involve a box frame that supports the system (single or multiple runs) with some kind of a trapeze bar.



The seismic performance levels of cable tray systems are presented according to current seismic design codes. A performance-based optimum seismic design procedure for cable tray

...

Contact Us

For more information, pricing, or custom data center solutions, please contact us:

Website: <https://www.yoahorroenergia.es>

Email: hello@yoahorroenergia.es

Phone: +233 54 318 7269

Address: Plot 28, Spintex Road, Accra, Greater Accra, Ghana

This document is for informational purposes only. Specifications subject to change without notice.

