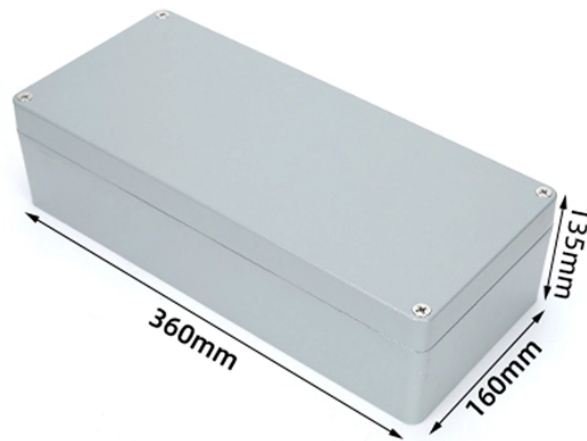


Rsc cold joint



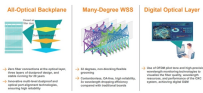
Overview

A concrete cold joint is a visible seam or plane where two batches of concrete meet without proper intermixing or bonding. The delayed placement prevents full integration and knitting between the concrete batches and might. A cold joint in concrete construction is a plane of weakness that forms when new, wet concrete is poured against concrete that has already begun to harden. This discontinuity occurs because the older material has passed its initial setting time, preventing a true chemical bond with the fresh mix. Question: Difference between a contraction joint, isolation joint, expansion joint, construction joint, an. This weakens the structural integrity and often leads to issues like cracks, water leaks, and reduced load-bearing capacity.

Rsc cold joint



Question: When should saw cuts be made on a concrete slab?



Cold joints create critical flaws in concrete. Learn how these weaknesses develop, their structural impact, and practical methods for prevention and repair.



What is a Cold Joint in Concrete? Cold joints occur when a fresh concrete batch is poured against a partially hardened existing layer. As you know, concrete hardens through chemical reactions ...



Got cracks or weird lines in your concrete slab? It might be a cold joint. Here's how to spot it and stop it before it ruins your pour.



90° cold joint angle is the most critical angle for splitting tensile strength. This study aims to understand the effect of different cold joint angles on splitting tensile and compressive strength of ...



Whether you're planning a new project or looking to repair existing concrete work, understanding the importance of control joints and the risks of cold joints is key to making informed ...



Learn about concrete cold joints: their causes, prevention strategies, and effective repair techniques to ensure structural integrity and durability.



It's important for construction professionals to understand what causes cold joints and how to manage them effectively. This article takes a closer look at the key issues related to cold joint concrete. We'll ...



Repairing cold joints in concrete is essential to restore structural integrity and prevent further issues like water infiltration or weakening. Below are the most effective cold joint repair ...



Abstract This study introduces a mechanics-based numerical model to characterize the behavior of cold joints in reinforced concrete members subjected to monotonic loading.

Contact Us

For more information, pricing, or custom data center solutions, please contact us:

Website: <https://www.yoahorroenergia.es>

Email: hello@yoahorroenergia.es

Phone: +233 54 318 7269

Address: Plot 28, Spintex Road, Accra, Greater Accra, Ghana

This document is for informational purposes only. Specifications subject to change without notice.

