

Roof cable trays need to be waterproofed



Overview

Cable trays and raceways create large penetrations accommodating multiple cables. Mechanical sealing devices or flexible boots often work better than permanent sealants. These steel frames are. Building penetrations for pipes, cables, and equipment represent the most vulnerable points in any waterproofing system – studies show 85-90% of building water leaks originate at penetrations rather than within continuous membrane areas. Every pipe, conduit, or structural element passing through. They give us a scientific way to approach Waterproof and Dustproof Performance Testing of Cable Trays. Designed to integrate with the roof system they provide a simple and reliable method that can be utilised now and at any point in the future.

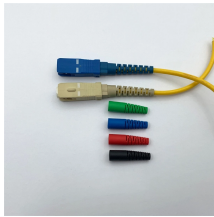
Roof cable trays need to be waterproofed



As buildings house more and more devices and systems requiring structured cabling, the need for sturdy cable tray support systems is growing. Our offerings suit cable trays in various widths and can be ...



When overhead installation is unavoidable, cable trays emerge as your ally in the battle against the elements. These sturdy structures elevate your cables above potential hazards, keeping ...



Professional guide to waterproofing building penetrations for pipes, cables, and equipment. Learn sealing strategies, material selection, and installation best practices.



The ROOFPORT® system provides a range of products that enables the safe routing of smaller cables and pipes through the waterproofing layer. Designed to integrate with the roof system they provide a ...



PHP's cable tray support system is engineered to sustain various sizes of cable runs on your rooftop. PHP is the leader in cable tray support systems.



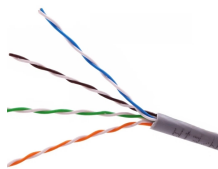
Professional guide to waterproofing building penetrations for pipes, cables, and equipment. Learn sealing strategies, material selection, and ...



For roof penetrations, service risers are used to ensure a weatherproof seal around cable trays as they enter the building. As well as being waterproof and windproof, these must also be ...



Outdoor cable tray and raceway systems are engineered to provide reliable cable management in harsh, exposed environments.



I often hear concerns about cable trays failing in damp basements or dusty factories. It's a real issue. This guide will explain how we test cable trays to make sure they protect your vital ...



The frame can be opened and closed repeatedly to allow for cable maintenance and additions. The sponge rubber pads are compressed around the penetrating items and can be easily cut to fit around ...



Learn essential steps for cable tray installation on roof, including support systems, material selection, and environmental considerations for optimal performance and durability.

Contact Us

For more information, pricing, or custom data center solutions, please contact us:

Website: <https://www.yoahorroenergia.es>

Email: hello@yoahorroenergia.es

Phone: +233 54 318 7269

Address: Plot 28, Spintex Road, Accra, Greater Accra, Ghana

This document is for informational purposes only. Specifications subject to change without notice.

