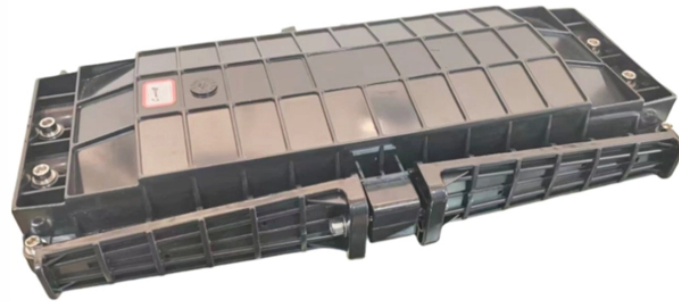


Road Fiber Optic Cable Well



Road Fiber Optic Cable Well



The old story about the most likely fiber optic communications system failure being caused by "backhoe fade" is not a joke – it happens every day. But it reminds us that digging safely is vitally important.



This article covers the basic guidelines for installation of fiber optic cable in underground plant. It is intended for personnel with prior experience in planning, engineering, or placement of underground ...



You can also call 1-800-427-7623 for current highway conditions. Mobile.

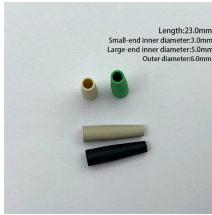
- ✓ See also [MPLS/VPN](#) for standard security considerations
- ✓ See also [MPLS/VPN](#) for special resolution applications
- ✓ See also [MPLS/VPN](#) for standard applications



Step by step directions for your drive or walk. Easily add multiple stops, see live traffic and road conditions. Find nearby businesses, restaurants and hotels. Explore!



She has deep knowledge of permitting and environmental compliance as well as erosion and sediment control issues that arise on linear utility projects. Her experience also includes extensive work in ...



Learn how fiber optic network construction works—from site survey and permits to aerial vs underground fiber cable installation, splicing, and FTTH connections.



Learn how they work. Find a better way to work! To pay tolls at bridges and in express lanes. The road map for the Bay Area's future. Call 511. Say "Freeway Assist" Help when you need it the most.



Our directional drilling services support the most advanced fiber optic and copper networks in the world. Whether it's direct point-to-point fiber connections or DWDM to accommodate OC-48 or OC-192 ...



The ExpressFiber disposable fiber cable is an economic, low-risk fiber solution for cross-well monitoring that provides direct measurement of well interference.



Road, traveled way on which people, animals, or wheeled vehicles move. In modern usage the term road describes a rural, lesser traveled way, while the word street denotes an urban roadway.



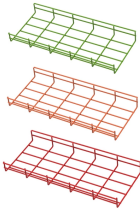
Find local businesses, view maps and get driving directions in Google Maps.



Real-time speeds, accidents, and traffic cameras. Check conditions on the Ventura and Hollywood freeways, I-5 and I-405, and other local routes. Email or text traffic alerts on your personalized routes.



Personnel feeding cable into a feed-chute must make sure that they do not position themselves inside a cable loop. Hearing protection may be required by vehicle operators. Pre-ripping provides a safety ...



Fiber optic cable sequential numbers are required at each pole location and vault wall. Sequential numbers will identify conduit length, and slack left in vaults and at poles.



Move the map above to view traffic conditions for greater Los Angeles County, Orange, Ventura, Riverside, and San Bernardino counties. Select layers to view incidents, construction and road flow.



Installation is similar to installing a messenger wire except it also includes a fiber optic cable that requires careful handling like any other fiber optic cable.



TYPES OF BURY CABLE AND INNERDUCT BORED AND PLOWED GENERAL NOTES: UNDERGROUND CONDUIT SHALL BE PLACED AT 42" MINIMUM COVER UNLESS OTHERWISE ...



Investigation into the Requirements for a General Order Providing Rules Governing Construction of Underground Electric and Communication Lines in the State of California.



Realtime driving directions based on live traffic updates from Waze - Get the best route to your destination from fellow drivers

Contact Us

For more information, pricing, or custom data center solutions, please contact us:

Website: <https://www.yoahorroenergia.es>

Email: hello@yoahorroenergia.es

Phone: +233 54 318 7269

Address: Plot 28, Spintex Road, Accra, Greater Accra, Ghana

This document is for informational purposes only. Specifications subject to change without notice.

