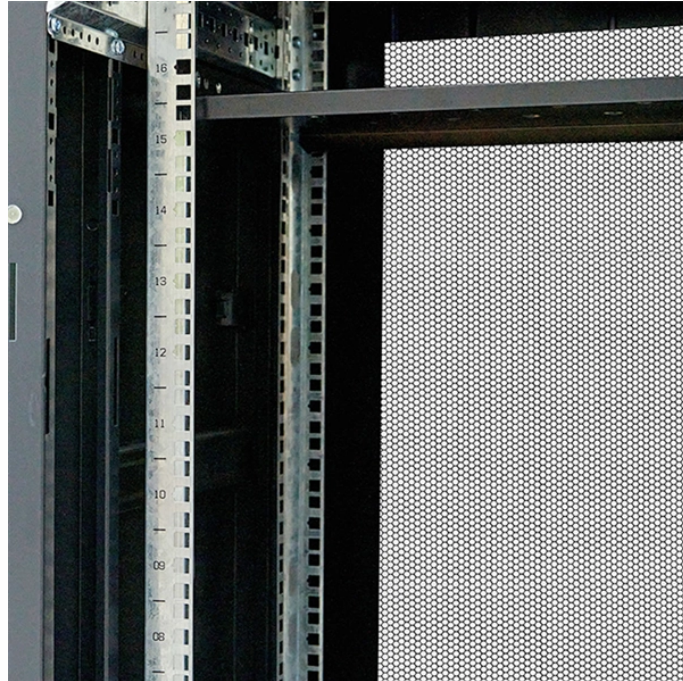


YoAhorroEnergia Data Infrastructure

RoHSPoE Switch 25G



RoHSPoE Switch 25G



Get it now! Flexible, 8-port 2.5 GbE PoE++ switch with a 10 GbE RJ45/SFP+ combination uplink port that can be powered with PoE+++ or an AC power adapter. NOTE: Optional ...



Ubiquiti USW-PRO-XG-24-POE 24-Port Layer 3 Etherlighting PoE+++ Switch with (16) 10 GbE, (8) 2.5 GbE and (2) 25G SFP28 Ports



Ubiquiti USW-PRO-XG-24-POE 24-Port Layer 3 Etherlighting PoE+++ Switch with (16) 10 GbE, (8) 2.5 GbE and (2) 25G SFP28 Ports



The Body Mass Index (BMI) Calculator can be used to calculate BMI value and corresponding weight status while taking age into consideration. Use the "Metric Units" tab for the International System of ...



Get it now! Flexible, 8-port 2.5 GbE PoE++ switch with a 10 GbE ...



Search Newegg for 25g network switches. Get fast shipping and top-rated customer service.



S5860-48MG-U, 48 x 5Gb RJ45, 4 x 25Gb SFP28, 2 x 40Gb QSFP+, L3 Managed PoE++ Switch
Broadcom | 1600W | Stacking | Airware Cloud | Hot-Swap US\$4,429.00 2 Solds



Calculate your BMI (Body Mass Index) with our women-specific BMI calculator. Get personalized results, healthy weight ranges, and expert recommendations for women's health.



QSFPTEK 25G data center switches support various advanced features such as MLAG and VxLAN, etc. It can diverse user requirements and future trends.



BMI Calculator for women finds Body Mass Index given weight and height. To check BMI divide your weight by your height squared. Calculator takes lbs, inches, kg, meters.



The HPE Aruba Networking CX 6300 Switch Series is a modern, flexible, and intelligent family of stackable switches ideal for access, aggregation, and data center top-of-rack (ToR) deployments.



With 24 x 25G SFP28 downlink ports (backward compatible with 10G) and 2 x 100G QSFP28 uplink ports (backward compatible with 40G), this switch is highly adaptable, serving ...



The switch implements 48 SFP28 25 GbE and 12 QSFP28 100 GbE ports in the 1RU chassis. The built-in switch chip provides bandwidth up to 3.2 Tbps and can provide line-speed L2 and L3 switching, ...



Enterprise-grade 24-port, Layer 3 Etherlighting™ PoE+++ switch with high-capacity 10 GbE RJ45 and 25G SFP28 connections for high availability system design.



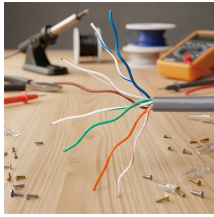
Enable powerful, reliable WiFi at your location with Pro WiFi access points, powered by PoE or an external power adapter. Yes. Centralized application to configure all switches across your entire ...



Instantly calculate your Body Mass Index (BMI) using pounds, feet, kilograms, or centimeters. Works for U.S., Canadian, UK, and Australian health standards.



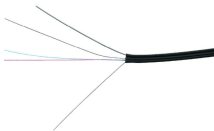
Use our BMI Calculator Women to quickly find your BMI, ideal weight, and health status. Track your fitness and maintain a healthy lifestyle tailored for women.



BMI Calculator for Women is a free and accurate tool to quickly calculate your BMI. Find out as a women if you are one of these BMI categories: Underweight, Healthy, Overweight or Obese.



Calculate your Body Mass Index instantly with this free Canadian BMI calculator (2026). Includes BMI chart, health risk assessment, ideal weight ranges, and Health Canada guidelines.



Find your BMI using our BMI calculator for women. Get insights into your BMI, its health assessment, and percentile comparison based on WHO guidelines.



Accurate BMI calculator specifically designed for women. Calculate your body mass index with gender-specific interpretations and health recommendations.



Specialized BMI calculator for women with gender-specific health considerations, reproductive health guidance, and personalized recommendations. Calculate body mass index with ...

Contact Us

For more information, pricing, or custom data center solutions, please contact us:

Website: <https://www.yoahorroenergia.es>

Email: hello@yoahorroenergia.es

Phone: +233 54 318 7269

Address: Plot 28, Spintex Road, Accra, Greater Accra, Ghana

This document is for informational purposes only. Specifications subject to change without notice.

