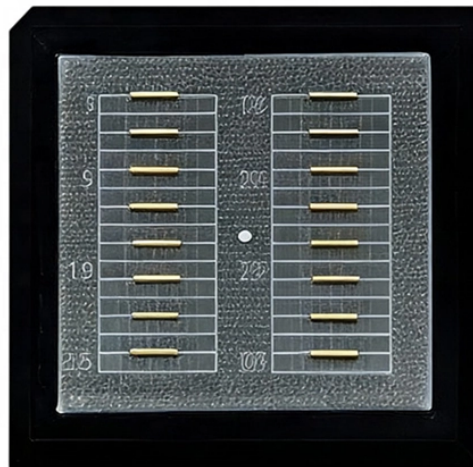


# Ring Network Fiber Optic Switch Module



## Overview

This multifunctional module is specifically designed by PROCENTEC to create optical redundant ring topologies with multimode fiber optics. It allows long cable distances up to 5 km and a galvanic isolation between devices and segments. What Is a Fiber Optic Ring Network?

A fiber optic ring network is a physical or logical network topology where devices (usually switches) are connected in a closed-loop using fiber optic cables. This design ensures data can. The fiber optic ring redundancy design for industrial Ethernet switches is precisely engineered to address this pain point—achieving millisecond-level fault self-healing through the synergy of physical ring architecture and intelligent protocols, thereby constructing the "self-healing heart" of. The Fiber Optic switch is used for designing an Ethernet network in loop topology. On account of the loop structure, the network is fully redundant since, in the case of a fiber rupture, it is possible to still communicate through the other side of the loop. In addition, every Fiber Optic switch. The TC3340 Redundant Gigabit Ethernet Switch Substation is a rugged, cost-effective networking solution for both industrial and

commercial fiber networks. It offers a wide range of advanced networking features including Self-Healing Ring capability, VLAN, QoS, Rate Limiting, Management, Security. This is a networking module that control engineers can support, built for PLC networks, built for connecting Ethernet remote I/O, with fiber and redundancy by design. Ethernet IT switches connect office computers and servers, and they direct data to destinations.

## Ring Network Fiber Optic Switch Module



Depending on their firmware capabilities, both devices and switches can operate as supervisors or ring participants on a DLR network. Only some DLR devices, such as switches, can operate as ...



The workshop deploys two independent fiber optic ring networks (Ring A and Ring B), each containing eight USR-ISG-8G industrial switches interconnected over 10 kilometers using 10G single-mode ...



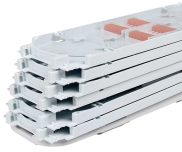
The ComBricks PROFIBUS Fiber Optic Ring modules allow the creation of a fiber optic ring or chain structured networks. The modules are capable of long distance connections using galvanic isolation ...



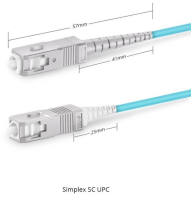
The Fiber Optic switch is used for designing an Ethernet network in loop topology. On account of the loop structure, the network is fully redundant since, in the case of an fiber rupture, it is possible to still ...



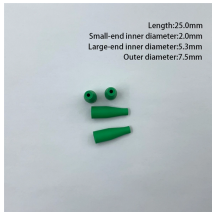
The 2x2 single-mode switches are fully reversing optical bypass switches, which are used to insert or bypass nodes in fiber ring networks. These non-blocking, non-latching components require a 5V DC ...



We offer solutions that provide seamless transmission and conversion from Ethernet media to multimode or singlemode fiber. Our Ethernet network switches with fiber ports comes in managed or ...



This is a networking module that control engineers can support, built for PLC networks, built for connecting Ethernet remote I/O, with fiber and redundancy by design.



Learn how to design a fiber optic ring network with practical diagrams, topologies, and switch setup tips. Explore ring network switch options for industrial applications.



This multifunctional module is specifically designed by PROCENTEC to create optical redundant ring topologies with multimode fiber optics. It allows long cable distances up to 5 km and a galvanic ...



Device Level Ring (DLR) is a Layer 2 protocol that enables redundancy in a ring topology, providing fast network fault detection and reconfiguration for industrial networks.



It offers a wide range of advanced networking features including Self-Healing Ring capability, VLAN, QoS, Rate Limiting, Management, Security and Industrial Hardened capability.

## Contact Us

For more information, pricing, or custom data center solutions, please contact us:

Website: <https://www.yoahorroenergia.es>

Email: [hello@yoahorroenergia.es](mailto:hello@yoahorroenergia.es)

Phone: +233 54 318 7269

Address: Plot 28, Spintex Road, Accra, Greater Accra, Ghana

This document is for informational purposes only. Specifications subject to change without notice.

