

Residual current protection device in the distribution box



Residual current protection device in the distribution box



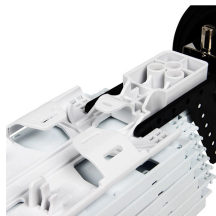
You will usually find the residual current circuit breaker in the power distribution box or fuse box. This is where the central point for the electrical supply is divided into different circuits.



About CSQ Electric CSQ Electric is a global leader specializing in low-voltage power distribution and control systems. Their product portfolio includes automatic transfer switches, molded case circuit ...



It provide additional protection in area where excessive earth leakage current present. It automatically disconnect the power when an earth leakage current reaches a preset value. RCDs with a sensitivity ...



SETRON RCDs combine residual current detection and overcurrent protection in just one modular width (MW) to deliver reliable personal and cable protection. RCDs from the SETRON portfolio offer ...



High-quality ceramic ferrule

Tripping current frequency response 500 mA Type S/Bfq Eaton's electrical business is a global leader with deep regional application expertise in power distribution and circuit protection; power quality, ...



A Residual Current Device (RCD) is a crucial electrical safety component that protects workers and equipment from dangerous earth leakage currents. By disconnecting power within ...



The main parts are the Miniature Circuit Breaker (MCB), Residual Current Device (RCD), busbars, and the main switch. Safe habits and checking the box often help stop electrical accidents.



An accurate protection of people and electrical equipment against leakage currents can be achieved by installing Residual Current Devices (RCDs).



Fixed RCDs are typically installed in the fuse box or distribution board and provide continuous protection for the entire electrical circuit. This is the perfect type of RCD installation for ...



RCDs are designed to disconnect the conducting wires ("trip") quickly enough to potentially prevent serious injury to humans, and to prevent damage to electrical devices. A two-pole, or double-pole, ...

Contact Us

For more information, pricing, or custom data center solutions, please contact us:

Website: <https://www.yoahorroenergia.es>

Email: hello@yoahorroenergia.es

Phone: +233 54 318 7269

Address: Plot 28, Spintex Road, Accra, Greater Accra, Ghana

This document is for informational purposes only. Specifications subject to change without notice.

