

Requirements for sockets for indoor fiber optic cables



Overview

If you are planning to install a fiber optic wall socket in your home, you will need to know how to properly install and use it. Designed to provide a clean, secure, and accessible termination point for indoor fiber connections, these outlets ensure optimal signal quality and minimal interference in residential and commercial environments. Whether you're a homeowner upgrading to fiber or a contractor planning network. The Fiber Optic Association, Inc. Existence of a standard shall not preclude any member or nonmember of NECA or FOA from specifying or using. A fiber wall socket (also called an optical termination outlet or FTTH outlet) is the critical endpoint where your home's fiber optic cable connects to the Optical Network Terminal (ONT). FO-VC2 JOINT USE - VERICAL MIDSPAN CLEARANCES 48. The cable should be bent as little as possible.

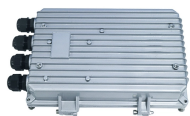
Requirements for sockets for indoor fiber optic cables



High-performance Fiber Optic Wall Sockets and FTTH Outlets for residential and commercial networks. Browse durable indoor optical faceplates, termination boxes, and wall plates designed for seamless ...



If you are planning to install a fiber optic wall socket in your home, you will need to know how to properly install and use it. This article will cover how to choose the right wall socket for your ...



The following contains information on the placement of fiber optic cables in various indoor and outdoor environments. In general, fiber optic cable can be installed with many of the same techniques used ...



Fiber optic cable sequential numbers are required at each pole location and vault wall. Sequential numbers will identify conduit length, and slack left in vaults and at poles.



Although most fiber optic cables are not conductive, any metallic hardware used in fiber optic cabling systems (such as wall-mounted termination boxes, racks, and patch panels) must be grounded.



The compact fiber wall plate supports mechanical/fusion splicing, termination, and cable management. It is ideally suited for wall-mounted, surface-mounted, or desktop applications in residential and small ...



Support structures for fiber optic cable installations should be completed before the installation of the fiber optic cable itself. Outside plant structures should be installed in conformance with all permits ...



The following language is recommended: Fiber optic cables shall be installed in accordance with NECA/FOA 301, Standard for Installing and Testing Fiber Optics. Use of NEIS® is voluntary, and ...



Whether you're a homeowner upgrading to fiber or a contractor planning network installations, this comprehensive buyer's guide will walk you through everything you need to know ...



What is a Fiber Wall Socket? A fiber wall socket houses the fiber connector that terminates the incoming fiber cable. It protects the delicate fiber end-face from dust, bends, and...

Contact Us

For more information, pricing, or custom data center solutions, please contact us:

Website: <https://www.yoahorroenergia.es>

Email: hello@yoahorroenergia.es

Phone: +233 54 318 7269

Address: Plot 28, Spintex Road, Accra, Greater Accra, Ghana

This document is for informational purposes only. Specifications subject to change without notice.

