

Requirements for installing cable trays in corridors



Overview

Cable tray systems are recognized as a wiring method by many national and international electrical codes. Typical requirements address: Tray construction, load ratings, and materials. Support spacing, mechanical strength, and. This article explains the main requirements and good practices for cable tray systems, including tray types, materials, loading, supports, bonding, cable selection, and installation details. Introduction and. Article Summary: A compliant cable tray installation requires a thorough understanding of NEC Article 392, proper structural support, and precise installation techniques. This section will guide you through the necessary steps to ensure a successful. Grounding is one of the most critical NEC considerations when installing metallic cable trays. Here's what you need to know: Cable Types: Only use.

Requirements for installing cable trays in corridors



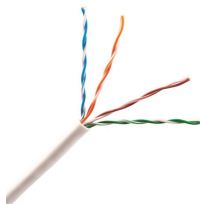
This article provides a comprehensive framework that governs various aspects of cable tray installations, including the types of cables that are deemed acceptable for use, requirements for ...



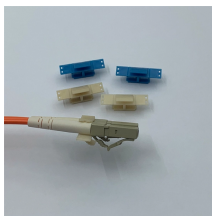
Master NEC Article 392 with our comprehensive guide. Learn essential cable tray requirements for installation, grounding, and fill capacity to ensure full electrical compliance.



Core rules for selecting, installing, grounding, and filling cable trays—clearances, materials, separation, and bonding explained.



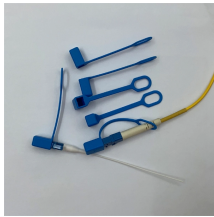
In making cable tray fill determinations, the best strategy is to review and follow the requirements of the NEC and the manufacturer's installation guides to determine the appropriate fill when installing cable ...



The Cable Tray Institute (CTI) was founded in 1991 to support the cable tray industry by engaging in research, development, education, and the dissemination of information designed to promote, ...



Learn the best practices for installing cables in trays. This guide covers essential steps, technical requirements, and key details for efficient cable tray installation.



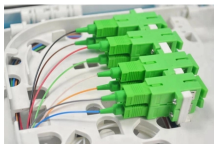
Cable tray installation must comply with specific technical standards to ensure electrical safety, system reliability, and long-term maintainability. This document ...



The Cable Tray system is installed in electrical rooms, plant rooms, and service corridors. This section will guide you through the necessary steps to ensure a successful installation.



Our solutions emphasize mandatory grounding and bonding for metallic trays, firestop systems at penetrations, and mesh tray options that reduce installation time while maintaining ...



This article explains the main requirements and good practices for cable tray systems, including tray types, materials, loading, supports, bonding, cable selection, and installation details.



Explore the essential cable tray support spacing requirements for safe and efficient installations. Learn NEC guidelines for perforated, ladder, and wire mesh trays.



A professional guide to installing electrical cable tray systems per NEC Article 392. Covers support, securing cables, and fill calculations.

Contact Us

For more information, pricing, or custom data center solutions, please contact us:

Website: <https://www.yoahorroenergia.es>

Email: hello@yoahorroenergia.es

Phone: +233 54 318 7269

Address: Plot 28, Spintex Road, Accra, Greater Accra, Ghana

This document is for informational purposes only. Specifications subject to change without notice.

