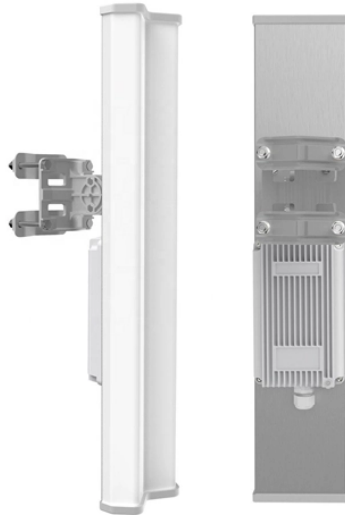


Replacing sockets in home smart distribution boxes



Overview

Summary: Step by step guide and video showing how to replace a socket, replace a damaged face-plate, replace a damaged surface-mounted socket, replace a single socket with a double socket, install a flush-mounted box and fit a surface-mounted box. Buyers typically pay for a full panel replacement, including labor, materials, and permits. The article outlines cost ranges, per-unit pricing, and practical. What are the shipping options for Meter Sockets?

All Meter Sockets can be shipped to you at home. What's the top-selling product within Meter Sockets?

The top-selling product within Meter Sockets. Whether you need to replace your electric meter box because of damage, update your meter box to new technology or just have power lines connected to a workshop or shed, you can find everything you need to get the job done right at Lowe's. Replacing an Existing Socket (Removal) 1. The interval between site visits by utility personnel could be as much as 100 times as long as the current monthly opportunity for inspection.

Replacing sockets in home smart distribution boxes



The space allocation for this enclosure allows for the replacement of lifetime-expired equipment, installation of Smart Meter equipment and for some degree of future supply capacity ...



Whether you're dealing with an old electrical meter, upgrading your utility closet, or simply enhancing the number of circuit breakers to accommodate different outlets, these upgrades are vital ...



Here is the Ultimate Smart Home Tech Tour for Distribution Board DIY used by KC868 Smart Controller. Step by step, it's very easy to DIY. Perfect for Smart home 2020.



In short: No. Replacing a meter box is one of the few home repairs that is virtually impossible—and illegal—to do yourself. The "Live" Factor: The wires coming from the grid to your ...



Buyers typically pay for a full panel replacement, including labor, materials, and permits. Key cost drivers include panel amperage, indoor vs outdoor location, wiring length, and whether a full ...



GFCI and AFCI protection should be downstream of the SHP using GFCI/AFCI breakers or outlets. Follow NEC or local electrical codes for AFCI or GFCI installation. An additional accessory ...



Get free shipping on qualified Meter Sockets products or Buy Online Pick Up in Store today in the Electrical Department.



Whether you need to replace your electric meter box because of damage, update your meter box to new technology or just have power lines connected to a workshop or shed, you can find everything you ...



If any damage is discovered, the meter socket should be replaced with a new meter socket that meets current specifications by a qualified electrician prior to the installation of the new meter.



Now you can use Google's voice-activated speaker to control your Smart Home sockets and adaptors. With the Google Assistant, you can turn on your lights without pressing a button!



1. Line up the new socket to mounting box and take note of where each terminal is located. 2. Connect each wire to the matching terminal. (Refer to key in step 2).



How to Install Anker SOLIX F3000 with Bi-Directional Inlet Box & Smart Meter | Step-by-Step Guide Ready to optimize your home's energy with the Anker SOLIX F3000? ☑️ In this detailed guide, we walk you through ...

Contact Us

For more information, pricing, or custom data center solutions, please contact us:

Website: <https://www.yoahorroenergia.es>

Email: hello@yoahorroenergia.es

Phone: +233 54 318 7269

Address: Plot 28, Spintex Road, Accra, Greater Accra, Ghana

This document is for informational purposes only. Specifications subject to change without notice.

