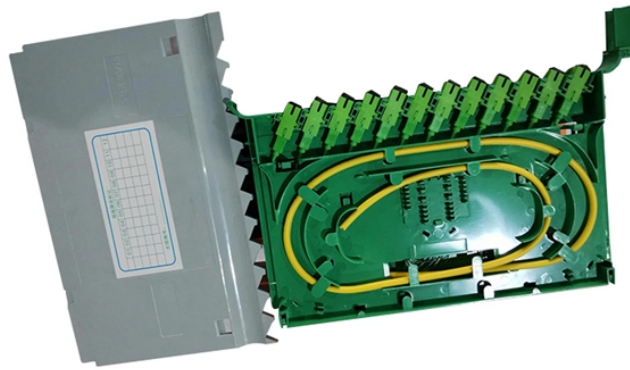


Remotefault Optical Module



Overview

The optical module is faulty or not securely installed. If the transmit optical power is abnormal, replace the optical module. Remove and. The article Digital Diagnostic Function (DDM) For Optical Modules describes that DDM function can be used for real-time monitoring and fault location of the module's working status, in which the optical module's transmitting optical power and receiving optical power are the key parameters for. First, the transmission class of the optical module fault investigation and solution method This type of optical module failure mainly includes port not UP, port status is UP but do not receive or send messages, port frequently up or down and CRC error. Specific troubleshooting methods and. An optical module is a critical component in modern optical communication systems, directly affecting transmission stability, network reliability, and operational efficiency. However, during installation and daily operation, various issues may arise. After analyzing the specific reasons, the most common problems are concentrated in the following aspects: 1. As the core optoelectronic devices operating at the Physical Layer of the OSI model, their.

Remotefault Optical Module



What happened to the failure of the optical module, and how to judge the failure of the optical module. The failure of the optical module function is divided into the failure of the transmitting ...



When the transmit optical power exceeds the nominal working range, it may cause the optical module to work abnormally, thus affecting the network data transmission, and users can carry out preliminary ...



Explore the essential principles and types of optical modules for fiber optic communication systems.



Explore the essential principles and types of optical modules for fiber optic communication systems.



To rectify the fault, use optical modules from the same vendor. Perform a short fiber loopback test. If the fault cannot be located, replace the optical module or fiber.



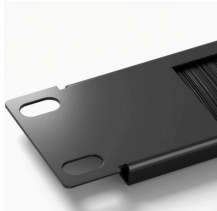
I have an extreme switch recently configured, the optical port is not working very good. The link state is always active for a while (couple of hours to couple of days), and then change to link ...



Based on typical issues encountered with optical modules in daily switch applications, this document summarizes basic troubleshooting steps for resolving common faults:



In this article, we will focus on teaching you how to troubleshoot and solve the common three categories of optical module failure. First, the transmission class of the optical module fault ...



Check whether the transmit optical power and receive optical power of the optical module are within the normal range. If the transmit optical power is beyond the normal range, replace the ...



optical module troubleshooting guide covering common faults, compatibility issues, optical link failures, ESD risks, and practical solutions.



Remove and reinstall the optical module. If the fault persists, replace the optical module with a normal one of the same type to check whether the optical module is faulty. If the fault persists, collect log ...

Contact Us

For more information, pricing, or custom data center solutions, please contact us:

Website: <https://www.yoahorroenergia.es>

Email: hello@yoahorroenergia.es

Phone: +233 54 318 7269

Address: Plot 28, Spintex Road, Accra, Greater Accra, Ghana

This document is for informational purposes only. Specifications subject to change without notice.

