

Relative quota for installing railway cable trays



Overview

Fill Limits: For power cables, the fill must not exceed 40% of the tray's cross-sectional area; for control cables, it's 50%. Understanding the cable tray installation cost per meter is essential for effective budget planning. Costs vary based on tray material (steel, aluminum, or fiberglass), size, design (ladder or solid bottom), and installation complexity. Additional elements like supports, connectors, and brackets. This is the first edition of the Metrolinx Rail Corridor Raceway Requirements (MX-ELEC-RCWY-2018-REVH). This document provides implementation requirements for raceways needed to run power and communications conductors for Electrification, Signalling, I&IT and Radio Systems in the Rail corridor. The right cable tray sizing calculator helps engineers turn cable schedules into a verified tray width and fill check before material ordering and site installation. IEC 61537 covers cable tray and cable ladder systems for the support and accommodation of cables, while NEC Article 392 governs cable. NEC Article 392 governs cable tray installations, covering tray types, fill limits, cable types permitted, and ampacity adjustments. The fill rules differ significantly between single-conductor cables and multiconductor cables, and between ladder tray and solid-bottom tray.

Getting the fill. For the best experience on our site, be sure to turn on Javascript in your browser. Here's what you need to know: Cable Types: Only use.

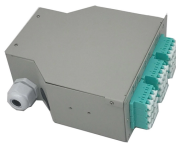
Relative quota for installing railway cable trays



The 2026 NEC introduced an important update: cable trays must have at least 12 inches of clear vertical space above them to allow for installation and maintenance access.



The document outlines the process of estimating manpower requirements for cable tray installation in construction. It emphasizes the lack of free, universally accepted man-hour data, recommending paid ...



We offer complete kits to provide you with cable tray ready to install under new or existing raised floors based on the unique requirements at your facility.



This method statement covers the site installation of the cable tray & ladders and the requirements of checks to be carried out.



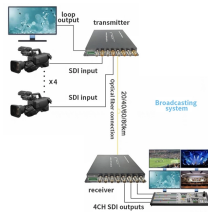
Master NEC Article 392 with our comprehensive guide. Learn essential cable tray requirements for installation, grounding, and fill capacity to ensure full electrical compliance.



This guide covers the cable tray types and their appropriate applications, the fill rules for each configuration, ampacity derating requirements, separation of power and signal cables, and the ...



Fabricated in numerous styles (wiremesh, ladder, ventilated trough, channel, and solid-bottom) and sizes, cable tray provides the greatest versatility among cable support systems, while offering ...



Use this cable tray sizing calculator to check fill %, select tray size, and comply with IEC 61537 & NEC 392 with formulas, example and checklist.



When evaluating the cable tray installation cost per meter, several critical factors need to be considered. These factors not only affect the initial purchase price but also influence the overall ...



Cable trays use is restricted to radio towers between bunker and tower within system buildings, across pedestrian bridges and rooms (i.e. bungalows, bunkers, electrical and control rooms).

Contact Us

For more information, pricing, or custom data center solutions, please contact us:

Website: <https://www.yoahorroenergia.es>

Email: hello@yoahorroenergia.es

Phone: +233 54 318 7269

Address: Plot 28, Spintex Road, Accra, Greater Accra, Ghana

This document is for informational purposes only. Specifications subject to change without notice.

