

## Red knob in explosion-proof distribution box







Box type product adopts high quality steel plate welding structure; the main cavity and auxiliary cavity are of up and down structure; wall type installation; bottom inlet, front operation and back overhauling.



Equipped with specialized hinge structure, which can prevent the flameproof joints from damage when opening and closing the panels, and greatly prolong the service life of box.



Equipped with a specialised hinge structure which can prevent damage to the flameproof joints when opening and closing the box; greatly prolongs the service life of the box.



This product is combined with flame-proof cavity and an increased safety cavity, the branch switch and the main switch are operated by the operating handle on the panel.



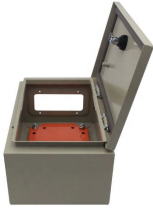
Description Suffix Momentary red emergency "STOP" button - front operated mushroom button, breaks normally closed contacts only..... S111 Lockout provision on front operated pushbutton cover ...



CZ Electric Co., Ltd was established in 1990, is a CZ1290 Explosion-proof distribution boxes suppliers, and is headquartered in Jiaxing City, Zhejiang Province, CZ can provide users with comprehensive ...



With our in-depth expertise and many years of experience, R. STAHL is the perfect partner for explosion-protected power distribution in any instrumentation and control engineering, battery ...



BARTEC offers one of the most extensive ranges of explosion-proof and substance-resistant components, devices, and systems for controlling, switching, and ...

## Contact Us

For more information, pricing, or custom data center solutions, please contact us:

Website: <https://www.yoahorroenergia.es>

Email: [hello@yoahorroenergia.es](mailto:hello@yoahorroenergia.es)

Phone: +233 54 318 7269

Address: Plot 28, Spintex Road, Accra, Greater Accra, Ghana

This document is for informational purposes only. Specifications subject to change without notice.

