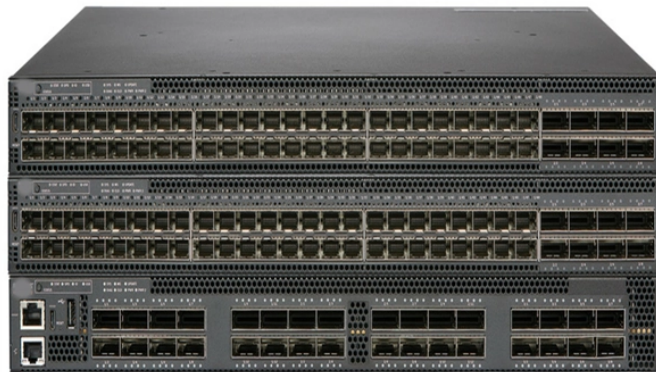


# Purpose of Relay Protection Devices



## Overview

Protective relays are devices used in power systems to detect faults and abnormal conditions. Their main purpose is to quickly identify problems such as short circuits or overloads and send signals to circuit breakers to isolate the faulty section, preventing damage and ensuring. In electrical engineering, a protective relay is a relay device designed to trip a circuit breaker when a fault is detected. Eng, IEEE Life Fellow IEEE/IAS/I&CPSD Protection & Coordination WG Chair Jacobs Canada. Its main purpose is to safeguard electrical equipment like transformers, generators, and transmission lines from damage due to abnormal conditions such as overloads, short circuits, or voltage imbalances. RPA automatically detect faults and emergency situations, then take action to disconnect the damaged section of the network to protect equipment and ensure stable and reliable power supply.

## Purpose of Relay Protection Devices



A protective relay is an intelligent electrical device designed to detect faults in power systems and initiate corrective actions such as tripping a circuit breaker.



Purpose is the feeling of having a definite aim and of being determined to achieve it. The teachers are enthusiastic and have a sense of purpose.



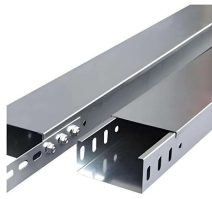
Protective relays are essential devices that detect faults and abnormal conditions in power systems and initiate corrective actions to isolate faults. Their purpose is to safeguard ...



practical result, effect, or advantage: to act to good purpose. intentionally: How could you do such a thing on purpose? to the point: Her objections were not to the purpose. to set as an aim, intention, or ...



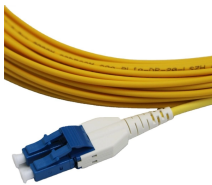
Purpose is the end for which something is done, created or for which it exists. Purpose is an abiding intention to achieve a long-term goal that is both personally meaningful and makes a positive mark ...



By coordinating with other protective devices, such as fuses, circuit breakers, or disconnect switches, protective relays ensure selective and coordinated fault clearance, optimizing the overall protection ...



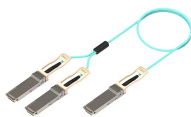
A protective relay is an automatic device that detects abnormalities in an electrical circuit and closes its contacts. This action completes the circuit breaker 's trip coil circuit, causing the ...



Relay protection and automation (RPA) are critical systems in electrical networks. RPA automatically detect faults and emergency situations, then take action to disconnect the damaged ...



A protective relay is an intelligent device that senses abnormal electrical conditions, such as overcurrent, under-voltage, or frequency deviations. It initiates the operation of circuit breakers to ...



There are nine meanings listed in OED's entry for the noun purpose, four of which are labelled obsolete. See "Meaning & use" for definitions, usage, and quotation evidence.



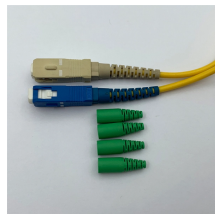
Microprocessor-based solid-state digital protection relays now emulate the original devices, as well as providing types of protection and supervision impractical with electromechanical relays.



What Is Purpose? To psychologists, purpose is an abiding intention to achieve a long-term goal that is both personally meaningful and makes a positive mark on the world.



PURPOSE definition: the reason for which something exists or is done, made, used, etc. See examples of purpose used in a sentence.



purpose (third-person singular simple present purposes, present participle purposing, simple past and past participle purposed) (transitive) To have or set as one's purpose or aim; resolve ...



The object toward which one strives or for which something exists; an aim or goal: Her purpose in coming here is to talk to you. The purpose of an airliner is to transport people. See Synonyms at ...



The objective of this presentation is to convey a basic understanding of protective relays to an audience of engineers already familiar with low voltage protective device coordination.



A protective relay is used to protect the device once the fault is detected within a system. Once the fault is detected, the fault location is found and then provides the tripping signal to the circuit breaker or CB.



Protective relays and devices have been developed over 100 years ago to provide “lastline” of defense for the electrical systems. They are intended to quickly identify a fault and isolate it so the balance of ...



The meaning of PURPOSE is the reason something is done or used : intention. How to use purpose in a sentence. Synonym Discussion of Purpose.



Feb 24, 2012· A protective relay is an automatic device that detects abnormalities in an electrical circuit and closes its contacts. This action completes ...



PURPOSE definition: 1. why you do something or why something exists: 2. If you do something on purpose, you do it.... Learn more.

## Contact Us

For more information, pricing, or custom data center solutions, please contact us:

Website: <https://www.yoahorroenergia.es>

Email: [hello@yoahorroenergia.es](mailto:hello@yoahorroenergia.es)

Phone: +233 54 318 7269

Address: Plot 28, Spintex Road, Accra, Greater Accra, Ghana

This document is for informational purposes only. Specifications subject to change without notice.

