

Protective housing for terminals of the three-level distribution box



Protective housing for terminals of the three-level distribution box



In lightning protection, the surge protection device in distribution boxes plays a crucial role. According to the principle of graded lightning protection, and based on the likelihood of a building being struck by ...



1. Overview waterproof outdoor electrical box is an indispensable part of the power system, and the ip68 junction box housing is crucial to protect the distribution equipment and ensure ...



How It Works: Electric Transmission & Distribution and Protective Measures The electricity supply chain consists of three primary segments: generation, where electricity is produced; transmission, which ...



In particular, it is applicable to any apparatus used for production, conversion, transmission, distribution and use of electrical power, such as machines, transformers, devices, measuring instruments, ...



You can refer to our guide on Differential Relay Setting Calculation for Transformer to understand the importance of protective relays in such systems. Final Thoughts on Power ...



Electrical distribution enclosures face harsh operating conditions, and choosing the right protection is critical to maintaining system reliability. Key challenges include: Outdoor exposure requiring ...



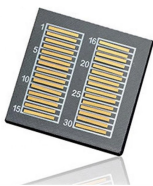
RCD/MCB-ready electrical switchboard enclosures with generous space, versatile mounting, & material choices.



The product portfolio includes feed-through terminal blocks, protective earth and PE-terminal blocks, multi-wire terminal blocks, multi-level terminal blocks such as double-level terminal blocks, three ...



your Power Distribution enclosure requirements
The nVent HOFFMAN Power System is specifically developed for power distribution panels for indoor applications, and is based on wall mounted and ...



High-quality terminal boxes made of 316SS or FRP rated NEMA 4X and IP66 protection making them perfect to use in harsh and hazardous environments.



Ground-fault protection for personnel shall be provided for temporary wiring installations utilized to supply temporary power to equipment used by personnel during construction, remodeling, ...



Electrical enclosures are protective housings used to safeguard electrical components such as breakers, switches, terminals, and controls. The ...



Schneider Electric USA. Discover our range of products in Terminal blocks, protectors and distribution blocks: Linergy TR Terminal Blocks, Square D 9080GCB Thermal Magnetic Circuit Protectors, Square ...

Contact Us

For more information, pricing, or custom data center solutions, please contact us:

Website: <https://www.yoahorroenergia.es>

Email: hello@yoahorroenergia.es

Phone: +233 54 318 7269

Address: Plot 28, Spintex Road, Accra, Greater Accra, Ghana

This document is for informational purposes only. Specifications subject to change without notice.

