

Principle of Fiber Optic Rate Matching in Switches



Overview

This article provides a detailed guide on how to match transceivers to switches effectively, focusing on technical specifications, real-world deployment examples, selection criteria, troubleshooting pitfalls, and cost considerations. Understanding transceiver compatibility is critical for network engineers who need to ensure seamless integration of fiber optic modules with switches. Using the wrong module can result in link failures, reduced performance, or complete incompatibility. This guide explains the key factors you must verify—based on actual industry. When it comes to the connection between two fiber optic transceivers, the following four factors should be taken into considerations: wavelength, speed, fiber type, and the connection to switches. A link's transmit signal (Tx) must match its corresponding receiver (Rx) at the other end. Although it may seem obvious, fiber optic polarity is a frequent source of confusion and.

Principle of Fiber Optic Rate Matching in Switches



A principle is a kind of rule, belief, or idea that guides you. You can also say a good, ethical person has a lot of principles.



Principle is a brand experience consultancy that combines rigorous thinking, creativity, and operational excellence to deliver transformation for global organisations.



The aim of this paper is to build a fiber-optic network that includes the optical switch, which is the most crucial component due to its critical role in fulfilling the demands of the fiber-optic ...



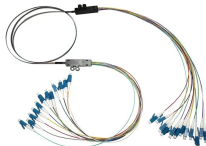
A principle can make values explicit, so they are expressed in the form of rules and standards. Principles unpack values so they can be more easily operationalized in policy statements and actions.



This article provides a detailed guide on how to match transceivers to switches effectively, focusing on technical specifications, real-world deployment examples, selection criteria, ...



Although the technique can't correct all errors under all network conditions, when properly specified, it can help network operators run at higher transmission rates while maintaining target Bit Error Ratios ...



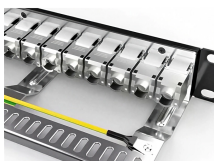
The meaning of PRINCIPLE is a comprehensive and fundamental law, doctrine, or assumption. How to use principle in a sentence.



Proper duplex polarity, where the transmit signal matches its corresponding receiver, is essential for fiber links to function. Learn more in this guide.



A basic truth, law, or assumption: the principles of democracy. 2. a. A rule or standard, especially of good behavior: a man of principle. b. The collectivity of moral or ethical standards or judgments: a ...



Fiber-optic switches are optical switches in the context of fiber optics. The simplest device is an on/off switch with one input and one output, which allows light to pass with low insertion loss when open, ...



When it comes to the connection between two fiber optic transceivers, the following four factors should be taken into considerations: wavelength, speed, fiber type, and the connection to ...



Fiber-optic switches are optical switches in the context of fiber optics. The simplest device is an on/off switch with one input and one output, which allows light to ...



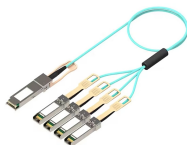
Need pricing or want to avoid ordering the wrong optics? Share the details and we'll help you select compatible transceivers, cables, and breakouts ...



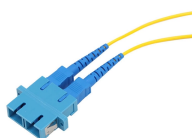
A fiber optic transceiver converts electrical signals to optical signals (Tx) and back again (Rx). This guide breaks down the complex components (TOSA/ROSA) and explains the working ...



Ensuring Interoperability Between Two Fiber Optical Transceivers For a successful connection between two fiber optic transceivers, consider these four key factors: wavelength, speed, ...



PRINCIPLE definition: an accepted or professed rule of action or conduct. See examples of principle used in a sentence.



Need pricing or want to avoid ordering the wrong optics? Share the details and we'll help you select compatible transceivers, cables, and breakouts for your switch ports - and send back a ...



Principal ® SimpleInvest portfolios are comprised primarily of Principal ® products, including affiliated mutual funds and ETFs.



In this reference, we'll explain the difference between "principal" and "principle", give you examples, share easy tricks to remember them, and help you use them correctly in speaking and ...



Understanding the difference between principal and principle is essential for English learners. These words sound alike but have distinct meanings and uses, which often leads to confusion.



Learn how to match SFP modules with your switch or media converter by checking compatibility, speed, fiber type, wavelength, and distance. A clear and practical guide.



PRINCIPLE definition: 1. a basic idea or rule that explains or controls how something happens or works: 2. If you agree.... Learn more.

Contact Us

For more information, pricing, or custom data center solutions, please contact us:

Website: <https://www.yoahorroenergia.es>

Email: hello@yoahorroenergia.es

Phone: +233 54 318 7269

Address: Plot 28, Spintex Road, Accra, Greater Accra, Ghana

This document is for informational purposes only. Specifications subject to change without notice.

