

# **Primary Distribution Box Iron Fence Protection**



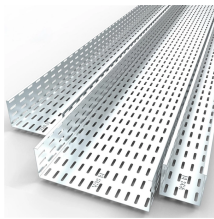
## Primary Distribution Box Iron Fence Protection



It acts as a protective enclosure that houses several key components, such as circuit breakers, fuses, and bus bars. These components work together to prevent electrical faults, such as ...



This document provides specifications for fencing at grid, primary, and secondary substations. It specifies that steel palisade fencing should be used for security ...



Shop high-quality iron panel boxes for reliable electrical distribution. Durable, waterproof, and available in various sizes for indoor and outdoor use.



Our metal fencing undergoes a multi-stage pretreatment process with a high-quality TGIC powder coat finish. This can resist rust and protect against UV fading. Our quality fencing solutions won't "chalk," ...



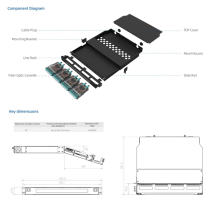
PVC Double-Coated Feed-Thru Device Box, FD Series, Double Gang, Deep Style, Pipe Size 3/4 Inch/21 Metric, Iron Alloy, Dark Gray



Upgrade your Matrix Systems to have an added layer of protection with the Ballistic Shields. Ideal for critical infrastructure, like power utility and substations. Learn more about the ways Ameristar is ...



Safety and protection of equipment as well as working personnel is also a considerable factor. Lightning arresters, earthing of equipment and ...



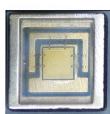
A distribution box (distribution board/DB box) distributes incoming power to multiple circuits and typically houses protective devices such as breakers and optional leakage/surge protection.



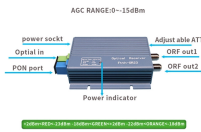
What are you working on that you have exposed electrical conductors and equipment? Yes, the bare MV overhead line is running along the fence. The post for overhead line is 15" away ...



For protection and traffic control, bollards from SecureTech offer strength and reliability. When set in concrete or bolted to the ground, bollards resist impact and discourage motor vehicles.



We have a wide selection of steel fencing panels in stock and we offer bulk and custom fence orders through our manufacturing partners. We can help you find the perfect fencing panels to complete ...



Safety and protection of equipment as well as working personnel is also a considerable factor. Lightening arresters, earthing of equipment and fencing is done for this purpose.

## Contact Us

For more information, pricing, or custom data center solutions, please contact us:

Website: <https://www.yoahorroenergia.es>

Email: [hello@yoahorroenergia.es](mailto:hello@yoahorroenergia.es)

Phone: +233 54 318 7269

Address: Plot 28, Spintex Road, Accra, Greater Accra, Ghana

This document is for informational purposes only. Specifications subject to change without notice.

