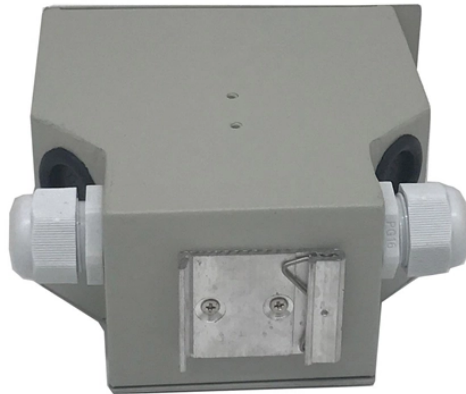


# Power supply from the small busbar in the computer room



## Overview

In , a busbar (also bus bar) is a metallic strip or bar, typically housed inside,, and for local high current power distribution, transmission, or switching substations. They are also used to connect high voltage equipment at electrical switchyards, and low-voltage equipment in. They are generally uninsulated, and have sufficient stiffness to be s.



## Power supply from the small busbar in the computer room



Busbars are the backbone of a low-voltage switchboard: rigid ...



Power supply outlets with custom configurations can be added at any location along the busbar power distribution tracks without the need for external companies. The power plug-ins can be single or ...



Both underfloor distribution and overhead busbar distribution are viable options for power distribution in data centers, and the choice between them depends on factors such as the layout of the data center, ...



Connecting the power source to the bus bar or connecting the bus bar to the load is a complicated subject. It typically involves bolting a heavy, yet somewhat flexible, cable with crimped ...



In electric power distribution, a busbar (also bus bar) is a metallic strip or bar, typically housed inside switchgear, panel boards, and busway enclosures for local high current power distribution, ...



Busbars are the backbone of a low-voltage switchboard: rigid conductors that collect and distribute current safely between incoming devices and outgoing feeders.



**\*\*Power Input\*\***: The busbar system receives power from the main supply lines, typically through transformers. The incoming power is then directed into the busbar system for routing.



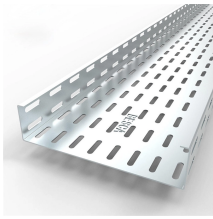
In electric power distribution, a busbar (also bus bar) is a metallic strip or bar, typically housed inside switchgear, panel boards, and busway enclosures for local high current power distribution, transmission, or switching substations. They are also used to connect high voltage equipment at electrical switchyards, and low-voltage equipment in battery banks. They are generally uninsulated, and have sufficient stiffness to be s...



Using innovative busbar power technology, Rittal's industrial power distribution solutions optimize AC and DC applications for use on a global scale.



Remote Power Panels (RPPs) distribute power directly to the IT server racks or cabinets. Usually, RPPs are installed in close proximity to the racks, and typically in the same white space.



Both underfloor distribution and overhead busbar distribution are viable options for power distribution in data centers, and the choice between them depends on ...



Three power supplies feed this DC bus bar assembly through a repeating series of blade style pluggable output “tabs” along its length. The long, narrow design makes short jump connections clean and easy ...



In offices, the term “busbar” usually refers to a type of powertrack that's typically installed within raised access floors and used to supply power to floor boxes beneath desks and workstations.

## Contact Us

For more information, pricing, or custom data center solutions, please contact us:

Website: <https://www.yoahorroenergia.es>

Email: [hello@yoahorroenergia.es](mailto:hello@yoahorroenergia.es)

Phone: +233 54 318 7269

Address: Plot 28, Spintex Road, Accra, Greater Accra, Ghana

This document is for informational purposes only. Specifications subject to change without notice.

