

## Power Supply Requirements for Factory Distribution Boxes



## Power Supply Requirements for Factory Distribution Boxes



Our power pendant outlet boxes provide industrial-grade power distribution for job sites. These boxes feature mesh strain relief grips and durable rubber construction to support safe cable management.



Along with the preference for volatile power generating technologies, they lead to increasingly challenging problems for peak load supply and intensified requirements for the integration of ...



To ensure safety, efficiency, and meet the increasing demand for usage, the electrical distribution system needs to meet the following requirements: The system must operate continuously ...



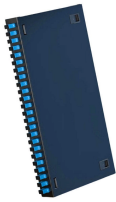
Discover how industrial power distribution systems convert utility power into safe, reliable electricity—minimizing downtime, enhancing safety, and reducing energy costs.



Because the electrical power requirements are generally large in a manufacturing facility you would typically see high-voltage power distribution ...



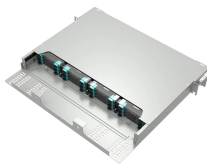
Because the electrical power requirements are generally large in a manufacturing facility you would typically see high-voltage power distribution (4,160 volts or 12 kilovolts) as opposed to ...



Optimize your cable distribution box layout for safety and efficiency. Learn industrial best practices using Chuanli's IEC-standard outdoor and custom boxes.



Learn how to design an efficient factory power layout with expert tips on planning, safety, and system integration for industrial facilities.



The course now has been modified to meet current requirements of National Electric Code (NEC) and is designed especially for Engineers, Inspectors and others concerned with electric power distribution ...



The installation requirements and specifications of Distribution box involve many aspects, including site selection, fixing method, wiring specifications ...



Learn how to design an electrical power distribution system step by step, covering load analysis, voltage selection, equipment choice, and safety compliance.



A schematic of the power distribution of a factory can be seen in the figure below. The majority of factories using this model approach are large and medium-sized ones.

## Contact Us

For more information, pricing, or custom data center solutions, please contact us:

Website: <https://www.yoahorroenergia.es>

Email: [hello@yoahorroenergia.es](mailto:hello@yoahorroenergia.es)

Phone: +233 54 318 7269

Address: Plot 28, Spintex Road, Accra, Greater Accra, Ghana

This document is for informational purposes only. Specifications subject to change without notice.

