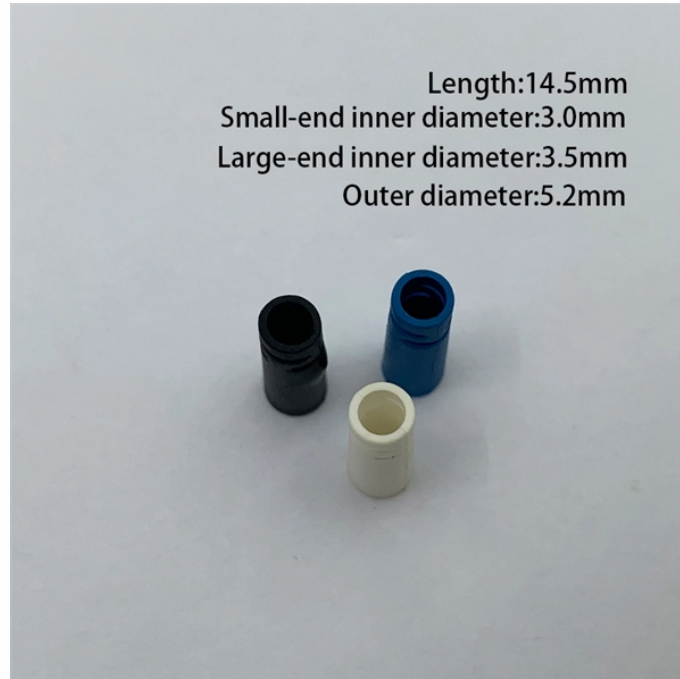


Positive and negative terminals of Uruguayan laser diode



Overview

- Diode anode: Positive terminal; internally connected to the P-type semiconductor region; it is the entry point for current into the diode. How Does a Diode. The term LASER stands for Light Amplification by Stimulated Emission of Radiation. Also, remember that a diode is a polarized device so we can not connect it in any polarity. They have a narrow spectral linewidth, meaning they emit light at a specific wavelength.



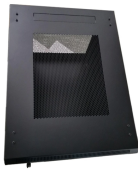
Positive and negative terminals of Uruguayan laser diode



The LDC (Laser Diode Cathode) and PDA (Photodiode Anode) terminals are connected to the negative side, ensuring that the laser diode is forward biased and the photodiode is reverse ...



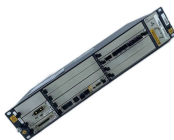
When the cathode terminal of the diode is connected to the positive terminal of the power source the diode will block the current flow and it is called reverse bias. The cathode terminal of the ...



If the positive terminal of the battery is connected to the p-type semiconductor and the negative terminal of the battery is connected to the n-type semiconductor, the diode is said to be forward biased.



The common (+) is connected to the positive terminal of the voltage source while the other two terminals LDC and PDA are connected to the negative terminal making the laser diode forward bias and the ...



The schematic symbol of a laser diode consists of a diode symbol with two arrows pointing outwards, representing the emitted light. The positive and negative terminals of the laser diode represent the ...



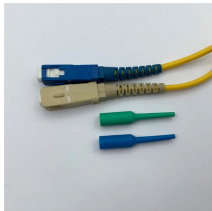
Laser diodes are very sensitive devices and several precautions must be taken when using these diodes. Among these precautions, the most important include remaining below the ...



Connect the positive terminal (+) of the laser diode to the 5V output of the MB102 power supply module. Connect the negative terminal (-) of the laser diode to the Collector (C) of the transistor. The transistor ...



The first pin is the anode, which is the positive pin that provides power to the laser diode. The second pin is the cathode, which is the negative pin of the laser diode.



Learn everything about diode polarity, including diode direction, diode anode vs cathode, diode markings, polarity symbols, and practical tips for identifying diode positive and negative sides in PCB ...



In the LD Guide tab, we will walkthrough an overview of the major considerations and warnings involved with handling and operating laser diodes. Damage mechanisms are introduced and common ...

Contact Us

For more information, pricing, or custom data center solutions, please contact us:

Website: <https://www.yoahorroenergia.es>

Email: hello@yoahorroenergia.es

Phone: +233 54 318 7269

Address: Plot 28, Spintex Road, Accra, Greater Accra, Ghana

This document is for informational purposes only. Specifications subject to change without notice.

