

PoE switch voltage is unstable



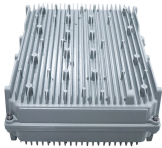
Overview

Check PoE Budget: Ensure the PoE switch or injector has enough power budget to support all connected devices. Verify Cable Quality: Use Cat5e or higher cables for reliable power. In a basic PoE power supply system, the major components are the power sourcing equipment (PSE), the powered device (PD), and the PoE cables. When a problem occurs with PoE, in most cases, the error symptom can be simply shown as the PoE switch not providing power, and the powered devices will stop. Power over Ethernet (PoE) technologies, including Universal Power Over Ethernet (UPOE) and PoE+, have become foundational in modern networking environments, especially in contexts where reducing wiring complexity and costs is crucial. Here are some common PoE issues and how to troubleshoot them: 1. Insufficient Power Delivery. The solution for troubleshooting a PoE issue includes trying the steps outlined below before concluding that the issue is due to configuration problems, interoperability issues, or physical defects that require the device to be RMA'ed. These are widely used in various data networks across industries, retail chains, traffic control systems, and other diverse applications.

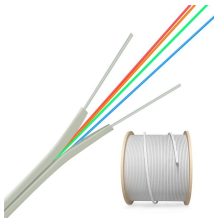
PoE switch voltage is unstable



When testing the power supply stability of PoE switches, an oscilloscope can be used to detect whether there are any abnormal conditions such as ripple and surge in the power output, ...



This article will walk you through troubleshooting PoE switch problems, address common issues, and a checklist for improving PoE Switch Reliability. If you're ...



Insufficient Power - First, check the powering switch, its power management configuration, and if it's working properly. If that is fine, then check the cabling, their connected ports, ...



This article will walk you through troubleshooting PoE switch problems, address common issues, and a checklist for improving PoE Switch Reliability. If you're managing a PoE-powered network, this guide ...



By following these troubleshooting steps, you can address and resolve common PoE issues effectively, ensuring reliable power delivery and optimal performance for your network devices.



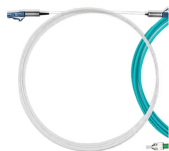
If your powered device (e.g., an IP camera) fails to power on or frequently disconnects when connected to a Zyxel PoE switch, please follow this troubleshooting checklist:



Common PoE faults include PoE switch not providing power, a PD powering off or reloading, and some PD powering on while others are not. Here provides PoE troubleshooting lists ...



Choosing high-quality network cables and high-performance PoE switches, as well as maintaining appropriate power supply distance and model selection, is the key to solving this problem.



This article will list a few simple steps about how to do a check on the switch when the Internet is unstable and try to solve the problem.



One of the most frequent issues encountered in PoE networks is power allocation failures. This typically occurs when connected devices require more power than the PoE switch can ...



Check if the issue is due to power re-injection - Remove any connections where we expect the power to be injected into the device rather than receiving the power.

Contact Us

For more information, pricing, or custom data center solutions, please contact us:

Website: <https://www.yoahorroenergia.es>

Email: hello@yoahorroenergia.es

Phone: +233 54 318 7269

Address: Plot 28, Spintex Road, Accra, Greater Accra, Ghana

This document is for informational purposes only. Specifications subject to change without notice.

