

## PoE switch red anomaly



### Overview

This guide provides a step-by-step troubleshooting framework focusing on Cisco Catalyst switches (notably the 9300 and 2960 series), covering error categories, CLI commands, model-specific insights, and preventive measures. a central server room where the bulk of the network gear is (router, main switches and servers) and two remote location in the same building but on different floors. Check your device's LED or LCD screen. Here are some important LED statuses to be aware of: Does Not Turn On: See [Troubleshooting an Offline Device](#) to. This morning, I found that the C9115 AP led light connected to the C9300L-24P-4X switch blinks red-green-blue cyclically, and I checked the POE switch and found that the poe status of the port connected to the AP is down, but I can see that the interface is connected to the AP in the show cdp. Your UniFi switch is up, your devices are plugged in, and everything looks good, until you realize your access point or camera isn't powering on. If you're staring at a dead UniFi device connected to a PoE port, this guide is for you. Hello, on my 1930 24p POE+ i am getting random "Hardware Faults" in POE setion, only on not POE enabled. @ChAoSWK Please reach out to support to assist in troubleshooting your issues.

## PoE switch red anomaly



However, the power supply of the two switches is running normally from the appearance, and the power indicator is not abnormal. The C9300L-24P-4X is a two-switch stack, and the AP is abnormally ...



When POE is enabled on ports with devices that don't use POE I frequently get the POE errors with a "Internal Hardware Fault" in the column "Fault Status". As a workaround I disabled POE ...



Inspect the PoE port lights on the PoE switch or PoE injector to confirm if the camera is fully connected. If the lights are not illuminated, try plugging the camera into other ports and using a ...



If the upgrade fails, the Alta Logo LED will blink red 3 times repeatedly. If this occurs, please ensure that the connected network has a valid Internet connection and attempt automatic ...



Learn how to troubleshoot PoE issues on Cisco Catalyst switches. Step-by-step diagnosis for no power, intermittent resets, partial power, and camera failures.



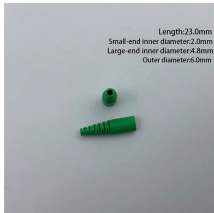
This post walks through why PoE might not be working and how to fix it. From port settings to firmware updates and power budgets, we cover everything you need to get your gear back online, without the ...



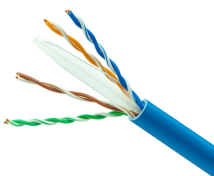
The latest anomaly log begins with my primary switch (USW Pro XG 48 PoE) "experiencing frequent STP role state changes" on all ports that have a switch connected to it.



I had this issue between my new UDM Pro Max and USW Pro Max 24 PoE. They're connected with a set of fiber SFP+ modules but are both in the same cabinet, I went in and manually set the ...



Verify your UniFi device's IP address. See below for a detailed walkthrough of this process. Review your switch port tagging and network override settings. Check for a network loop. If it is receiving an ...



For best PoE output functionality, please use the power jack to power the CSS unit. The wAP has a default configuration with the ethernet port defined as WAN port.

## Contact Us

For more information, pricing, or custom data center solutions, please contact us:

Website: <https://www.yoahorroenergia.es>

Email: [hello@yoahorroenergia.es](mailto:hello@yoahorroenergia.es)

Phone: +233 54 318 7269

Address: Plot 28, Spintex Road, Accra, Greater Accra, Ghana

This document is for informational purposes only. Specifications subject to change without notice.

