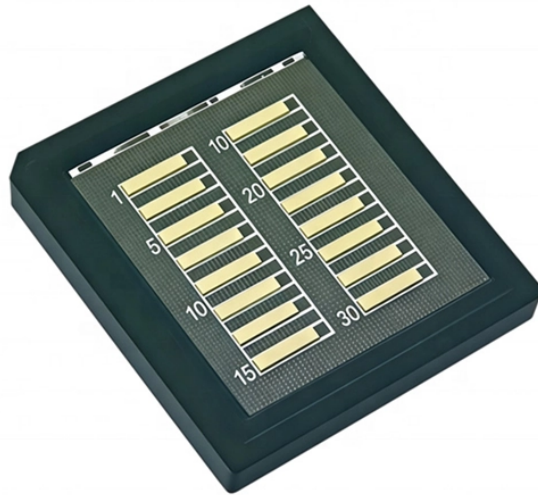


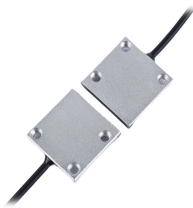
## Park Monitoring Distribution Box



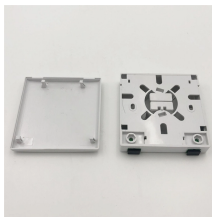
## Park Monitoring Distribution Box



This solution enables efficient electricity distribution across the park's zones while improving overall supply reliability.



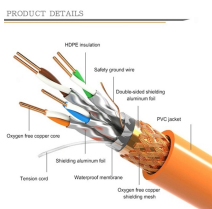
The distribution box is embedded with the DTU distribution device, distribution device power module, and distribution device power supply. By leveraging the intelligent remote monitoring function, you ...



Our passive sensor actuator boxes consist of plastic, standardised M8 and M12 plug-in slots, and a wide range of connection options for the trunk cable. You can choose between M23, M12, M16, a ...



In this Paper, the primary focus is on the distribution box health monitoring from which load power distribution monitoring is done. Distribution box is one from which power is distributed to low level.



You depend on a low voltage distribution box to keep electrical systems safe and efficient in an industrial park. This device manages power up to 1,000 volts AC and supports reliable operation.



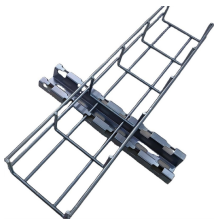
A feeder pillar, often referred to as a feeder pillar box, is an outdoor electrical enclosure used to distribute and manage electrical power. You'll typically find them installed on streets, in ...



These units can include remote monitoring and control equipment to track usage and ensure system is working properly. Milbank Power Distribution & Controls can also be configured to support additional ...



This article covers the types, features, and advantages of power DB boxes, as well as their manufacturers and frequently asked questions.



Take your power distribution equipment to the next level by managing your critical loads at the individual circuit level. Rely on Cyberex circuit management solutions to monitor and alert your staff of potential ...



PowerWave 2 branch circuit monitoring provides a quick plug-and-play installation, intuitive integration with building management system (BMS), and is scalable to accommodate facilities' reconfigurations ...

## Contact Us

For more information, pricing, or custom data center solutions, please contact us:

Website: <https://www.yoahorroenergia.es>

Email: [hello@yoahorroenergia.es](mailto:hello@yoahorroenergia.es)

Phone: +233 54 318 7269

Address: Plot 28, Spintex Road, Accra, Greater Accra, Ghana

This document is for informational purposes only. Specifications subject to change without notice.

