

Painting the ground wire connection of the cable tray



Overview

, latex, oil-based) can insulate the ground wire, preventing proper grounding. Non-conductive paint (e. Cable tray may be used as the Equipment Grounding Conductor (EGC) in any installation where qualified persons will service the installed cable tray system. If you take what UL states literally, ANY cut to tray (ladder or wire) would cause a loss of UL Classification. For example, when a straight section of tray is cut to length and used in conjunction with a factory fitting — this installation would also. These systems provide an efficient and adaptable solution for managing a wide range of cables, including power cables, control cables, Ethernet, and fiber optic lines. At the panel, the cable is installed in conduit (s) for the vertical.



Painting the ground wire connection of the cable tray



At the vertical drops, a #3 insulated wire is split bolted onto the #3/0 and run with the tray cable in each separate conduit down to the panel. In the panel: you now have 2x #3 ground wires, ...



This article provides a comprehensive framework that governs various aspects of cable tray installations, including the types of cables that are deemed acceptable for use, requirements for ...



Learn best practices for cable tray installation, support, and accessories. Cables must be secured to the cable tray prior to and after the transition, and protected by guarding or location.



Electrically paralleling the single conductor EGC with the Cable Tray by bonding the single conductor EGC to the cable tray every 50 to 100 feet produces an installation that may provide some degree of ...



Learn grounding and bonding requirements for wire mesh cable tray systems. Stay NEC compliant while safely installing power, control, Ethernet, and fiber...



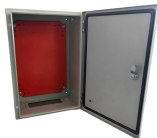
Learn the essential role of Equipment Grounding Conductors (EGC) in cable tray systems, including sizing requirements, installation standards, and NEC compliance for electrical safety.



Illustration 3: Single Conductor Power Tray bonded with EGC continuous ground wire on side, sized per max breaker. The above illustrations represent over 99% of all cable tray installations.



Discover the best practices for Cable Tray Grounding Wire installation. Learn key requirements, safety tips, and material choices to ensure a grounding system.



In addition to providing an electrical connection between the cable tray sections and the EGC, the grounding clamp mechanically anchors the EGC to the cable tray so that under fault current ...

Contact Us

For more information, pricing, or custom data center solutions, please contact us:

Website: <https://www.yoahorroenergia.es>

Email: hello@yoahorroenergia.es

Phone: +233 54 318 7269

Address: Plot 28, Spintex Road, Accra, Greater Accra, Ghana

This document is for informational purposes only. Specifications subject to change without notice.

