

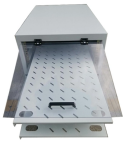
PDU Wiring Process for Header Cabinets



PDU Wiring Process for Header Cabinets



1. The installer must locate the ignition output from the vehicles wiring harness and run an 18 AWG wire from this point to the ignition input (IGN IN) on the PDU.



Rack Power Distribution Unit (PDU) Installation Instructions Date: Nov 25 2020 Type: Quick start guide Languages: Chinese, English, French, German, Italian, Japanese, Polish, ...



Make all connections to the unit before applying power. Note the external markings described under "Safety Symbols". Keysight chassis are provided with a grounding-type power plug. The instrument ...



Secure Array®: Connects up to 48 PDUs (or 32 PDUs, if integrated with RFID electronic locks) under one IP address. A second connection provides failover capability, allowing linked PDUs to stay ...



The PDU relies on the building installation for protection from over-current conditions. A certified overcurrent protection device is required in the building installation. The overcurrent protection ...



By using this device and carefully planning the distribution of mobile equipment power feeds, complex independent wire runs and unreliable fuse panel connections can be avoided. Each circuit can be ...



POWER DISTRIBUTION UNIT 1.0 SCOPE This document will describe the application instructions for power distribution unit into the cabinets. Read the following information before installing or operating ...



To set up RNA mode on two PDUs, the user must (1) configure the PDUs for RNA Mode (using CLI) and then (2) connect the LAN Network cords and Ethernet cords between PDUs.



For permanently connected PDUs, the installation must be performed by a licensed electrician, must be connected to an AC power source that is current limited by a properly rated circuit breaker or fuse ...



Panduit PDUs are designed for use with all Panduit cabinets and are compatible with most third-party data center racks. The PDU models vary in form factor with several mounting configurations available.



Simplify cabinet mounted PDU installation with this guide. Learn about tools, safety tips, and steps to ensure efficient power distribution and cable management.



In this video, we'll guide you through the complete assembly and testing process of a professional Power Distribution Unit (PDU).

Contact Us

For more information, pricing, or custom data center solutions, please contact us:

Website: <https://www.yoahorroenergia.es>

Email: hello@yoahorroenergia.es

Phone: +233 54 318 7269

Address: Plot 28, Spintex Road, Accra, Greater Accra, Ghana

This document is for informational purposes only. Specifications subject to change without notice.

