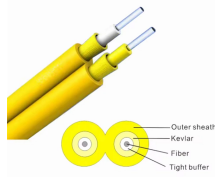


## Overseas Warehouse LPO Optical Module 1 6T



## Overseas Warehouse LPO Optical Module 1 6T



Explore 1.6T optical transceivers for AI and HPC data centers across US, China, Europe, and APAC. Learn about OSFP1600/XD, PAM4 lanes, LPO/CPO architectures, and LINK-PP high ...



The OSFP 1.6T LPO transceivers (500m, SMF) are also compliant with OSFP MSA, IEEE 802.3, OIF-CMIS, and RoHS standards, and are compatible with OSFP IHS connectors and ...



All are common within the OSFP module and all module voltages are referenced to this potential unless otherwise noted. Connect these directly to the host board signal-common ground plane.



1.6T OSFP DR8 LPO The MTRO-D5F8CL is designed to operate in switch and router applications supporting OSFP MSA compliant traffic for up to 500m links.



It supports up to 500m reach over single-mode fiber, operates within a 0°C-70°C case temperature range, and complies with IEEE 802.3df and OSFP1600 MSA standards, with support for CMIS 5.x. ...



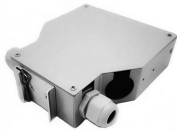
Future Trends: Beyond 1.6T and Co-Package  
Innovations Emerging Technologies: LPO (Linear  
Pluggable Optics) and CPO Integration LPO  
achieves a 30% reduction in power consumption ...



This article explains how this new 1.6T rate  
emerged, what the technical principles and key  
features of 1.6T optical modules are, the major  
module types involved, and the application ...



Our optical modules feature traditional DPO, low-  
power LRO, LPO, and Active Loopback designs for  
testing, and support data rates from 10G up to  
1.6T across a wide range of package types.



Each module integrates eight electrical and eight  
optical channels operating at 212.5 Gbps PAM4  
per lane for an aggregate data rate of 1.6 Tbps.  
With integrated DSP and silicon photonics (SiPh) ...

## Contact Us

For more information, pricing, or custom data center solutions, please contact us:

Website: <https://www.yoahorroenergia.es>

Email: [hello@yoahorroenergia.es](mailto:hello@yoahorroenergia.es)

Phone: +233 54 318 7269

Address: Plot 28, Spintex Road, Accra, Greater Accra, Ghana

This document is for informational purposes only. Specifications subject to change without notice.

