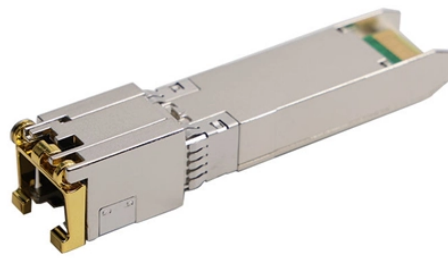


Outdoor 288-core optical fiber splice closure



Outdoor 288-core optical fiber splice closure



The 288 core 17 port dome fiber splice closure with splitter slot is a high-capacity outdoor enclosure designed for fiber splicing, distribution, and signal splitting in OSP and FTTH networks.



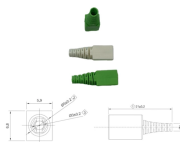
It supports the splitting and expansion of optical signals, fusion splicing, and the comprehensive protection, storage, and management of fiber optics. Its versatility makes it ideal for ...



Designed for configuration flexibility, these closures offer expanded slack storage, ...



High-capacity 288 cores IP68 Fiber Optic Splice Closure with heat-shrink seal for secure outdoor cable connections in communication systems.



With its robust engineering and modular design, it offers excellent mechanical strength and environmental protection. The closure is designed for easy installation and maintenance, making ...



Provides Durable, Customizable Protection for Outdoor Fiber Cable Runs This ...



Leading fiber closure manufacturers & suppliers, provide a range of horizontal and vertical fiber splice closures and support OEM ODM service.



Provides Durable, Customizable Protection for Outdoor Fiber Cable Runs This fiber splicing dome enclosure comes with six splice trays that accommodate up to 48 unterminated cables to give you ...



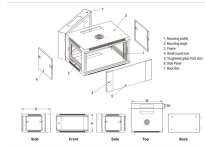
Boost your FTTx deployment with our 288-core inline fiber splice joint closure, designed with a 3-in-3-out port layout and IP68-rated protection to withstand the toughest outdoor conditions.



Outdoor Fiber Optic Horizontal Splice Closure 288 Cores DESCRIPTION Inline type fiber optic splice closure; 4 in, 4 out; for optical fiber splicing protection. It is a waterproof with sealing gasket between ...



Leading fiber closure manufacturers & suppliers, provide a range of horizontal and vertical fiber splice closures and support OEM ODM service.



It supports the splitting and expansion of optical signals, fusion ...



This fiber optic termination box is specially designed for outdoor FTTH applications. Made of high-strength ABS, the box is weather-resistant and has a long service life, even in harsh environments.



Designed for configuration flexibility, these closures offer expanded slack storage, various tray heights, and mass-platform storage.

Contact Us

For more information, pricing, or custom data center solutions, please contact us:

Website: <https://www.yoahorroenergia.es>

Email: hello@yoahorroenergia.es

Phone: +233 54 318 7269

Address: Plot 28, Spintex Road, Accra, Greater Accra, Ghana

This document is for informational purposes only. Specifications subject to change without notice.

