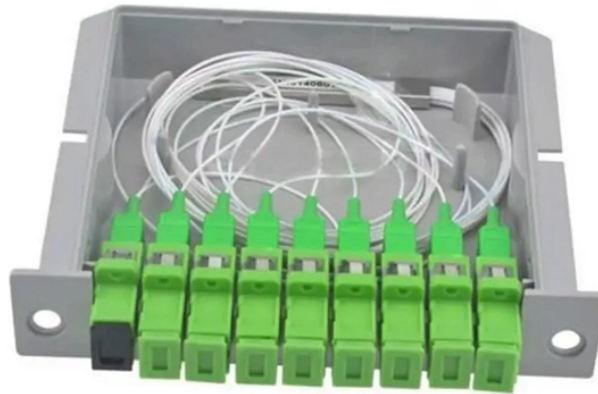


Optical power calculation for optical splitter



Overview

Instantly compute insertion loss, power at each subscriber port, and fade margin for PLC and FBT splitters — including dual cascade configurations. Covers GPON (1490 nm / 1310 nm), EPON, and RF video overlay (1550 nm). Understanding the types of splitters, their impact on network performance, and how to measure their losses ensures high-quality network operation and facilitates optimal splitter selection based on. Estimate whether an FTTH or PON optical link is feasible by calculating PLC splitter loss, fiber attenuation, connector loss, splice loss and remaining power margin between the OLT and ONU/ONT. It's about knowing what factors contribute to that loss, how manufacturers specify it, and how it impacts the overall performance and reach of your network. In fiber optics, a “ratio” is commonly used to describe how a splitter or. $TotalLoss = (Length \times Atten) + (Splices \times SpliceLoss) + (Connectors \times ConnectorLoss) + (Splitters \times SplitterLoss) + (PassiveEvents \times PassiveLoss)$ AllowableLoss = TxPower (dBm) – RxSensitivity (dBm) – Margin (dB) Received = TxPower (dBm) – TotalLoss (dB) – Margin (dB) Enter the route length and the.

Optical power calculation for optical splitter



Free GPON & FTTH fiber splitter calculator. Instantly compute optical power loss for PLC & FBT splitters with dual cascade support. Used by ISP engineers worldwide.



Splitter loss values are "Typical" and include a connector in and out. These values are approximate and should not be exceeded by more than 1-1.5 dB, which could indicate dirty connectors, bad splices, or ...



Learn how to perform optical power planning and calculate an optical power budget for fiber networks. Explore signal loss factors and VSOL SMB/FTTR solutions.



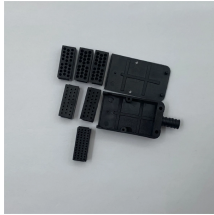
The calculation uses logarithms because optical power is measured and calculated using the decibel (dB) scale, which is logarithmic. The formula for the theoretical loss for each output port ...



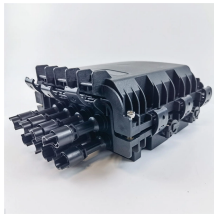
The calculator estimates expected loss for planning and documentation. Use OTDR and power meter testing for acceptance, fault location, and confirming workmanship quality in the installed link.



Calculating splitter loss in optical fibers is essential for designing efficient optical networks. Understanding the types of splitters, their impact on network performance, and how to ...



FTTH / PON Engineering Tool FTTH / PON Splitter Loss Calculator Estimate whether an FTTH or PON optical link is feasible by calculating PLC splitter loss, fiber attenuation, connector loss, splice loss ...



The document contains tables listing the insertion loss in dBm for various splitting ratios of an optical splitter, ranging from 1% to 99%. It also includes formulas for calculating insertion loss based on the ...



The splitter ratio in fiber optic networks refers to how optical power is distributed among the output ports of an optical splitter. Expressed as a ratio or percentage, the splitter ratio indicates ...



Enter the optical input power, additional loss, and select a PLC splitter or tap ratio to estimate the output power (in dBm) on each branch.

Contact Us

For more information, pricing, or custom data center solutions, please contact us:

Website: <https://www.yoahorroenergia.es>

Email: hello@yoahorroenergia.es

Phone: +233 54 318 7269

Address: Plot 28, Spintex Road, Accra, Greater Accra, Ghana

This document is for informational purposes only. Specifications subject to change without notice.

