

Optical module transceiver power supply impedance to ground



Optical module transceiver power supply impedance to ground



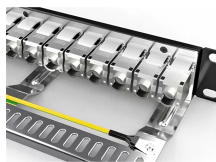
PPC's Transceiver modules are designed for optical communication applications compliant to the IEEE P802.3ba standard. The module converts input channels up to 25Gb/s electrical data to LAN WDM ...



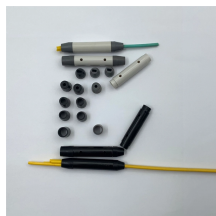
This specification defines the electrical connectors, electrical signals and power supplies, mechanical and thermal requirements of the OSFP-XD Module, connector and cage systems.



A lesser-known but vital design feature is the SFP module's gold finger (connector pins), which has varying lengths to ensure proper power-up sequence. The longest pins are for signal ground, ...



Connect these directly to the host board signal common ground plane. VccRX, Vcc1, and VccTX are the receiving and transmission power supplies and shall be applied concurrently. VccRX, ...



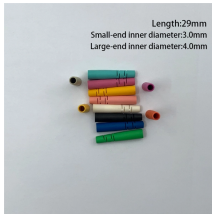
The Sky/Ground TTL Optical Transceiver Module (DC 5.5–26V, FC interface) has become my go-to solution for stable, high-speed data transfer between airborne and ground systems.



Engineer-friendly guide to using DDM/DOM readings to diagnose optical transceiver issues. Understand TX/RX power, bias current, voltage, temperature, failure ...



Specific resistance value is based on the optical module manufacturers to figure out the characteristics of the TOSA set, often for different manufacturers or different batches of TOSA, have ...



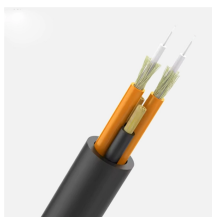
This product is a transceiver module designed for 500m optical communication applications. The module incorporates one channel optical signal, on 1310nm center wavelength, operating at 50Gbaud data rate.



Finisar transceivers are Class 1 Laser Products and comply with US FDA regulations. These products are certified by TÜV and CSA to meet the Class 1 eye safety requirements of EN (IEC) 60825 and ...



This guide provides average transmit and receive power ranges for transceiver modules. Transceivers are manufactured to meet the specifications (usually of the IEEE standards) and ranges represent ...



Functional Characteristics (Optical) The following tables list the performance specifications for the various functional blocks of the integrated optical transceiver module.



These guidelines provide comprehensive guidance regarding schematic-level design considerations and PCB layout guidelines for high-speed transceivers under different modes of operation.



DESCRIPTIONS ETU-link Transceiver is a high-performance, cost-effective module for optical data communication applications supporting 400G Ethernet. The ETU-link is designed to operate in switch ...

Contact Us

For more information, pricing, or custom data center solutions, please contact us:

Website: <https://www.yoahorroenergia.es>

Email: hello@yoahorroenergia.es

Phone: +233 54 318 7269

Address: Plot 28, Spintex Road, Accra, Greater Accra, Ghana

This document is for informational purposes only. Specifications subject to change without notice.

