

Optical module parameter alarm removal



Optical module parameter alarm removal



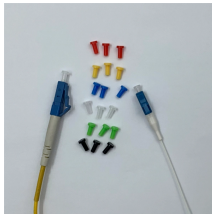
Check whether the interface where the optical module is installed has been used. If not, ignore this alarm. If so, install the corresponding optical module.



Optical shop in Santa Rosa, CA. Eye Care Institute offers expert eyewear fittings and frame selection in Sonoma County.



The following command shows how to enable the transmitting optical power alarm on port e8/1, set the maximum and minimum values, and clear the alarm thresholds.



Eye Glasses, Rx Sunglasses & Contacts Lenses Shop the largest selection of affordable eye glasses, prescription sunglasses, and eyewear for men, women, and kids.



Check the diagnostic information, which shows that the received optical power is low, with a threshold of -3 to -23.01, currently at -22.84. Once it exceeds the threshold, an alarm will be ...



The correct alarm information can be generated only when the global optical module parameter monitoring function is enabled (that is, global configuration ddm enable).



Find optometrists and ophthalmologists near you for eye exams, new glasses, and contact lenses. Search VSP's nationwide network of eye doctors.



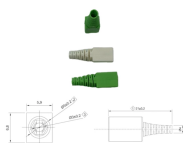
Ophthalmologists in Santa Rosa, CA. Get comprehensive vision care with expert optometrists offering eye exams, contact lenses, and eyeglasses in Sonoma County.



GPON System Optical Parameter Detection provides information about optical parameter diagnosis and the GPON port optical parameter threshold. It is mainly used to query the alarm monitoring of GPON ...



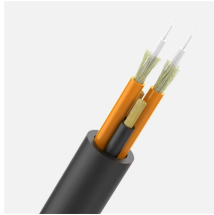
Your premier family optometry clinic. Vision is important to us and eyeglasses are as well, come check out the latest styles! Empire Optometry has it all: exams, glasses, contact lenses, lasik consults and ...



We are a network of trusted optometry practices proudly serving Northern and Southern California with exceptional vision care. From comprehensive eye exams and advanced technology to personalized ...



Description WLAN/4/AP_OPTICAL_REMOVE:OID AP optical remove. (APMAC= , APName= , IfIndex= , ApEntityPhysicalName= , APID= ...



Information about Bennett Valley Optometry--a family vision and eye care practice--including doctors, staff, hours, map and feedback.



Visit the Target Optical near you in Santa Rosa, CA at 950 Coddington Center for all your eyecare needs. We offer eye exams, prescription eyeglasses, sunglasses and contact lenses.



Description WLAN/4/AP_OPTICAL_REMOVE:OID AP optical remove. (APMAC= , APName= , IfIndex= , ApEntityPhysicalName= , APID= ...



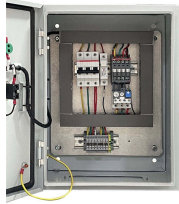
Get eye-catching styles and supplies for everyone. Shop Target for optical products at great prices. Free shipping on orders \$35+ or free same-day pickup in store.



These are the best affordable optometrists in Santa Rosa, CA: Site for Sore Eyes - Montgomery Village Empire Optometry & Eyewear Target Optical Family Optometry Center of Santa Rosa People also ...



This document describes the logs supported by the device, including the log message, description, parameters, possible causes, and handling procedure.



This feature provides the ability to disable and re-enable an optical module through CLI, which simulates online insertion and removal (OIR) by disabling power to the transceiver port.



1.4.2 Example of Setting the OLT Optical-Module Alarm The following example shows how to enable the light transmission power alarm on port e0/1, set the minimum and maximum values, and clear the ...

Contact Us

For more information, pricing, or custom data center solutions, please contact us:

Website: <https://www.yoahorroenergia.es>

Email: hello@yoahorroenergia.es

Phone: +233 54 318 7269

Address: Plot 28, Spintex Road, Accra, Greater Accra, Ghana

This document is for informational purposes only. Specifications subject to change without notice.

