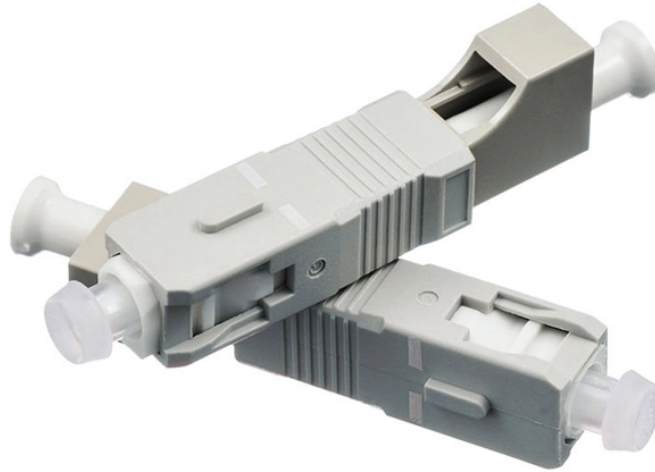


Optical module optical signal modulation



Overview

The typical optical modulation that are used include Dual Polarization Quadrature Phase Shift Keying (DP-QPSK) and QAM-16. These modules put the DSP on the module and use a conventional retimed digital interface. Optical modules typically have an electrical interface on the side that connects to the inside of the system and an optical interface on the side that connects to the outside. The optical module serves as a crucial component in optical fiber communication systems, operating at the physical layer, which is the lowest layer in the OSI model. Its primary function is to achieve optoelectronic conversion by converting electrical signals into optical signals and vice versa. If you're dealing with data centers, telecommunications, or AI networking, grasping the key parameters of an optical.

Optical module optical signal modulation



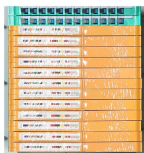
The optical signal transmitted through optical fibers is not constant; instead, it is a modulated signal with varying intensity. The characteristics and application differences between DML and EML modulation ...



Explore the essential principles and types of optical modules for fiber optic communication systems.



In order to save power within the module, optical modules have been made that used the digital interface definition, such as the CEI, but without retiming the signals within the module. These ...



What Is an Optical Modulator? A modulator encodes electrical signals onto the laser's light, controlling properties such as intensity, phase, or polarization to represent digital data. It acts ...



Explore the essential principles and types of optical modules for fiber optic communication systems.



Throughout this paper, we consider fiber or free-space systems that use optical amplifiers and/or nonlinear optical wavelength converters, and assume that that amplified spontaneous emission ...

DATA ADJUSTABLE, EASY TO USE



Explore the ultimate guide to optical modules. Learn types, functions, performance metrics & how to choose the right module for your fiber network.



Learn the complete working principle of optical modules (SFP transceivers), including TOSA/ROSA components, laser types, temperature compensation, and more. Weunion's high-performance SFP ...



The optical signal transmitted through optical fibers is not constant; instead, it is a modulated signal with varying intensity. The characteristics and application ...



When you pick up an optical transceiver module, several parameters need to be defined to ensure compatibility and efficiency. These include physical dimensions, interface types, spectral ...



Length:27mm
Small-end inner diameter:3.3mm
Large-end inner diameter:5.5mm

This review provides an introduction to the fundamental principles and classification of optical modulation, including electro-optic modulation, all-optical modulation, acousto-optic ...



Optical modulation can be categorized as direct modulation or external modulation. Direct modulation is directly performed on an optical source, which is usually a light-emitting diode (LED) or a laser, ...

Contact Us

For more information, pricing, or custom data center solutions, please contact us:

Website: <https://www.yoahorroenergia.es>

Email: hello@yoahorroenergia.es

Phone: +233 54 318 7269

Address: Plot 28, Spintex Road, Accra, Greater Accra, Ghana

This document is for informational purposes only. Specifications subject to change without notice.

