

Optical module not present alarm



Overview

Indicates no usable optical signal. If RX remains in alarm after reset and cleaning → likely far-end TX is off/faulty or the path is open (physical break or discontinuity in the fiber link). Unplugged connector at one end or both ends. Conventional, manufacturing, and alarm information about the optical module on an interface is displayed. To restrict the use of third-party modules on their devices, host manufacturers usually conduct inspections on the optical modules that are connected, including but not limited to reading the optical module manufacturer name, model number, serial number, custom part of the data (encrypted). A Comprehensive Professional Guide to Optical Transport Network Alarm Management What are OTN Alarms?

An OTN (Optical Transport Network) alarm is a notification mechanism that indicates the occurrence of an error, defect, or anomaly in the optical network infrastructure. These alarms are raised. Quick reference for interpreting Digital Optical Monitoring (DOM) values on fiber optic modules (SFP, SFP+, QSFP, etc), identifying acceptable, caution, and unacceptable levels, and general issue troubleshooting examples.

Optical module not present alarm



You can configure the alarm thresholds for the power, temperature, current, and voltage of optical modules, and the interval at which the inter-integrated circuit (I2C) collects optical module alarm ...



As core components of optical communication systems, the proper installation and use of optical modules directly impacts network stability. This article systematically identifies common ...



The Optical Transport Unit Loss of Frame (OTUK-LOF) alarm is raised when a frame loss is detected by an invalid frame alignment in the received frames. This alarm indicates that the ...



How to clear Unavailable Optical Module Alarm | SFP Module Alarm | ZTE BBU Current Alarms In this video you can learn that How to clear Unavailable Optical Module Alarm.



ModuleTek Laboratory lists some of the mainstream switch brands that have customized compatibility requirements, and shows you their measures for handling third-party modules.



In this article, we will focus on teaching you how to troubleshoot and solve the common three categories of optical module failure. First, the transmission class of the optical module fault ...



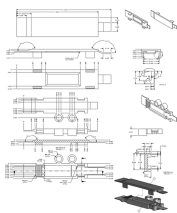
Optical module status log alarm, but view the specific module status i Dawson123 Level 1



An OTN (Optical Transport Network) alarm is a notification mechanism that indicates the occurrence of an error, defect, or anomaly in the optical network infrastructure. These alarms are ...



Quick reference for interpreting Digital Optical Monitoring (DOM) values on fiber optic modules (SFP, SFP+, QSFP, etc), identifying acceptable, caution, and unacceptable levels, and general issue ...



Check the diagnostic information, which shows that the received optical power is low, with a threshold of -3 to -23.01, currently at -22.84. Once it exceeds the threshold, an alarm will be ...

Contact Us

For more information, pricing, or custom data center solutions, please contact us:

Website: <https://www.yoahorroenergia.es>

Email: hello@yoahorroenergia.es

Phone: +233 54 318 7269

Address: Plot 28, Spintex Road, Accra, Greater Accra, Ghana

This document is for informational purposes only. Specifications subject to change without notice.

