

# **Optical Module Switch 2 Optical 4 Electrical Gigabit**



## Optical Module Switch 2 Optical 4 Electrical Gigabit



It provides IPv6/IPv4 dual stack management and built-in L2/L4 Gigabit switching engine along with 4 10/100/1000BASE-T ports featuring 30-watt 802.3at PoE+, 4 ...



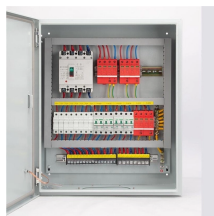
BL167GM-SFP is a managed industrial Ethernet switch with 2 Gigabit SFP and 4 ...



In order to meet the different requirements of industrial applications, this series adopts a modular design, up to 2 Gigabit optical fiber ports and 4 Gigabit Ethernet electrical ports, which enhances the ...



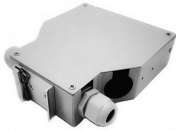
BL167GM-SFP is a managed industrial Ethernet switch with 2 Gigabit SFP and 4 Gigabit RJ45 ports, compliant with FCC, CE, and RoHS. It supports key Layer 2 protocols for stable communication, ...



4 Gigabit electrical ports + 2 Gigabit FX optical ports industrial Ethernet switch, supporting 4 100Base-T/1000Base-TX electrical ports and 2 1000Base-X optical ports. Products comply with FCC, CE, ...



BL167GM-SFP is a network managed industrial Ethernet switch that complies with ...



BL167GM-SFP is a network managed industrial Ethernet switch that complies with FCC, CE and RoHS standards. Support 2 gigabit optical ports and 4 gigabit electrical ports; Support Ethernet layer 2 ...



The QLD24G industrial Ethernet switch features 4 Gigabit electrical ports and 2 Gigabit FX optical ports, providing high-quality and reliable networking. This switch supports 100Base-T/1000Base-TX ...



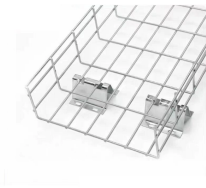
It can convert Optical Electric Ethernet signals between 10/100/1000M UTP ports and 1000M optical fiber ports and switch Ethernet signals between port and port.



4 gigabit electrical port +2 gigabit FX optical port industrial Ethernet switch BL167G supports 4 10Base-T/100Base-T/1000Base-TX electrical port and 2 1000Base-X optical port. Products comply with FCC, ...



It supports 4 electrical port device aggregation and dual optical port redundant transmission, meeting the diverse industrial communication needs from fixed links to flexible expansion.



It provides IPv6/IPv4 dual stack management and built-in L2/L4 Gigabit switching engine along with 4 10/100/1000BASE-T ports featuring 30-watt 802.3at PoE+, 4 additional Gigabit copper ports and ...



FW104GS-2F is an industrial full gigabit management Ethernet switch, which supports APOLLO visual cloud management, operation and maintenance. The equipment can be managed, operated and ...

## Contact Us

For more information, pricing, or custom data center solutions, please contact us:

Website: <https://www.yoahorroenergia.es>

Email: [hello@yoahorroenergia.es](mailto:hello@yoahorroenergia.es)

Phone: +233 54 318 7269

Address: Plot 28, Spintex Road, Accra, Greater Accra, Ghana

This document is for informational purposes only. Specifications subject to change without notice.

