

Optical Line Terminal and Optical Network Unit



Overview

An optical line termination (OLT), also called an optical line terminal, is a device which serves as the service provider endpoint of a passive optical network. It provides two main functions: to perform conversion between the electrical signals used by the service provider's equipment and the fiber optic signals used by the passive optical network. to coordinate the multiplexing between the conversion. Features OLTs include the following features:

- A downstream frame processing means for receiving and churning an cell to generate a downstream frame, and converting a parallel dat.
- Most vendors integrate an entire fiber optic management system for ISPs to manage OLTs as well as client ONTs and as such are not interoperable.
- • BT-PON.

Optical Line Terminal and Optical Network Unit



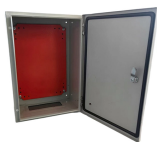
The OLT communicates with the optical network unit (ONU) or optical network terminal (ONT) at the user end, coordinating the distribution of data and ensuring that each connected user ...



In a Fiber Optic Network, a component called Optical Line Terminal (OLT) is a vital component that acts as an interface between the ISP and the subscriber. It is basically the endpoint hardware component ...



An optical line termination (OLT), also called an optical line terminal, is a device which serves as the service provider endpoint of a passive optical network.



This article will introduce passive optical networks (PON), in which we will introduce everything about OLTs, ONTs, ONUs, and ODNs, including their operation principles and functions.



In today's hyper-connected world, fiber optic networks are the backbone of high-speed internet infrastructure. These networks rely on two key components—OLT (Optical Line Terminal) ...



In short: The OLT (Optical Line Terminal) is the central control unit of a Passive Optical Network (PON). It converts data signals, manages bandwidth, and connects hundreds of users over ...



The main components of a GPON system include the Optical Line Termination (OLT), Optical Network Unit (ONU), and Passive Optical Splitter. The OLT is responsible for transmitting ...



As network demands become more complex, a variety of OLT types have emerged in the market to meet different application needs. This article will explore the fundamental functions of ...



In this guide, we'll break down the key components of a PON, including Optical Line Terminals (OLT), Optical Network Units (ONU), Optical Network Terminals (ONT), and Optical ...



Central to the functionality of a PON are two critical components: OLT and ONU (the optical line termination and the optical network unit). Understanding the roles and interactions of the ...

Contact Us

For more information, pricing, or custom data center solutions, please contact us:

Website: <https://www.yoahorroenergia.es>

Email: hello@yoahorroenergia.es

Phone: +233 54 318 7269

Address: Plot 28, Spintex Road, Accra, Greater Accra, Ghana

This document is for informational purposes only. Specifications subject to change without notice.

