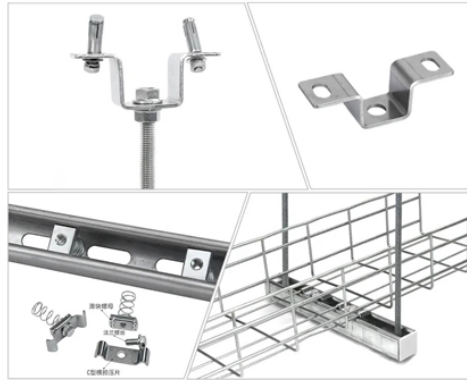


Note when disassembling bus connectors



Overview

Note You must remove the preceding module before removing the bus connector. Slide the bus connector away from the preceding bus connector at least 5. An improperly manufactured terminal may lead to poor communication in the media-oriented system (MOST) bus network which can potentially affect maintain your vehicle. These procedures should not be attempted by “do-it-yourselfers,” and you should not assume this bulletin. One wrong move during de-pinning or re-pinning can damage expensive components, create unreliable connections, or cause complete system failure. Whether you're working with automotive harnesses, industrial equipment, or electronic assemblies, understanding the dos and don'ts of de-pinning and zel. Do not pull on the units while the FAKR e FAKRA tools, see the job aid, Using the MOST above the center displ ver lower console panel and the passenger ws from the dashboard. Viewing a thread - How to remove these wires?

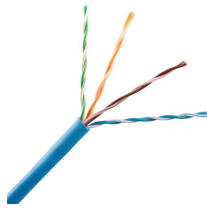
How to remove these wires?

Jump to page : 1 Now viewing page 1 [50 messages per page] Forums List -> Machinery Talk Posted 5/8/2015 18:16 (#4559013) Subject: How to remove these wires?

Subject: How to remove these wires?

I need to replace this iso bus. Activities including installation, adjustments, putting into service, use, assembly, disassembly, and maintenance are required to be carried out by suitably trained personnel in accordance with applicable code of practice.

Note when disassembling bus connectors



NOTE: Disassemble the connectors one at a time to avoid swapping the green and red wires. Install the matching color FAKRA splice repair service cables and splice boxes.



Since there are only two stations on the bus, it is obvious that the terminating resistor must be turned to the ON position. Then the wiring on the plug should be in and out.



Rotate the bus connector to remove it from the DIN rail. Note If you want to remove a bus connector in the middle of the system, you must remove any modules or bus connectors following ...



With the correct equipment and methods, depinning connectors can be a challenging procedure but is not impossible. In this blog, we will provide a step-by-step guide on how to depin a ...



Bus Bar Installation NOTICE All power connection fastener hardware must be properly torqued. Refer to the Caterpillar specification for each bolt and nut size. Failure to torque the fastener hardware will ...



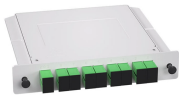
NOTE: Some models will have a CD player, DVD player or center pocket. Remove the DVD player, CD player or center pocket to gain access to the two 8 mm bolts holding the infotainment unit.



It is the objective of this publication to provide the necessary guidelines, considerations, and limitations for the proper application of Kinetix® and PowerFlex® drives that are used in common-bus ...



The proper steps and precautions for installing and removing electronic connectors to ensure reliability, prevent damage, and maintain performance.



Mark pin positions clearly during disassembly, and photograph complex connectors before de-pinning. Create detailed notes showing which pin goes in which cavity to prevent confusion during reassembly.



Looks like you are better off cutting them off and getting a new connector that will plug into the new connector. Those are just power wires, the CAN wires are the ones that go into the 4 pin ...

Contact Us

For more information, pricing, or custom data center solutions, please contact us:

Website: <https://www.yoahorroenergia.es>

Email: hello@yoahorroenergia.es

Phone: +233 54 318 7269

Address: Plot 28, Spintex Road, Accra, Greater Accra, Ghana

This document is for informational purposes only. Specifications subject to change without notice.

