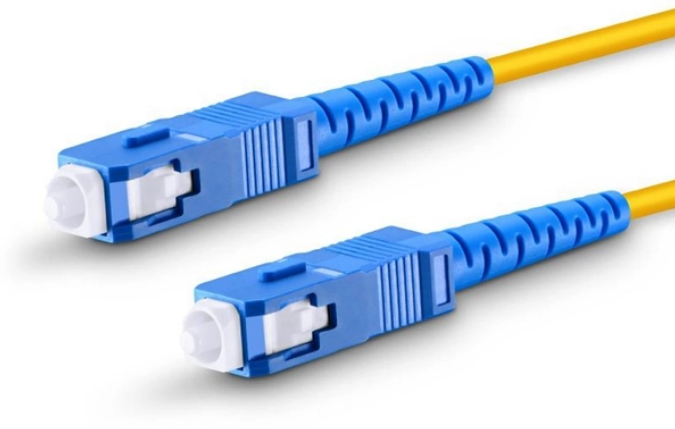


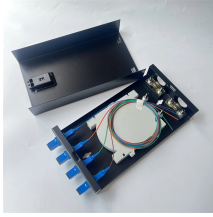
No network after connecting to the switch



Overview

If your Nintendo Switch won't connect to Wi-Fi, this could be due to network issues, out-of-range router, and your firewall. Luckily, there are a few ways to get your Switch back online. If your. The frustration of seeing “Unable to connect to network” while every other device works perfectly is something I experienced firsthand when my Switch refused to connect for three days straight. This guide covers every solution that actually works, including new fixes for the Nintendo Switch 2's. The Switch uses a wireless adapter to connect to nearby Wi-Fi networks. The console supports various Wi-Fi standards, including 802. 11ac, which provides fast and reliable connections.) can access the Internet through your wireless network by visiting a few websites. This error can be particularly frustrating as it restricts access to multiplayer modes, voice.

No network after connecting to the switch



Fix your Nintendo Switch WiFi issues with our step-by-step troubleshooting guide. Solutions for connection problems, slow speeds, and Switch 2 specific fixes.



Numerous Nintendo Switch players have come across an error (Unable to Connect to the network) when attempting to connect their device to the internet, which is preventing them from ...



How to fix the Switch not connecting to the internet or Wi-Fi The internet not working is a common Nintendo Switch problem, but thankfully, there are plenty of possible fixes.



Few things are more frustrating than sitting down to play online—only to find your Nintendo Switch won't connect to WiFi. Whether you're seeing ...



Few things are more frustrating than sitting down to play online—only to find your Nintendo Switch won't connect to WiFi. Whether you're seeing connection errors, slow download ...



What to Do When Your Switch Won't Connect to Wi-Fi Try these troubleshooting options to get your Switch back online. If nothing works, you'll have to contact Nintendo's tech support.



Hold down your Switch's power button for 12 seconds, then press the button once to turn on the console. Ensure that Wi-Fi is enabled and Airplane Mode is off especially if you have recently been in a ...



Numerous Nintendo Switch players have come across an error (Unable to Connect to the network) when attempting to connect their device to the ...



There are several reasons why your Switch may not be connecting to Wi-Fi, including issues with your internet service provider, router configuration, or problems with the Switch itself.



If your Nintendo Switch won't connect to Wi-Fi, this could be due to network issues, out-of-range router, and your firewall. Run a connection test, re-add the Wi-Fi network, or hard restart the ...



If all troubleshooting fails and no devices can connect online, you will need to contact your network administrator, router manufacturer, or Internet Service Provider for further assistance...



This guide walks you through fast checks, deeper network tweaks, and a clean fallback path to a wired connection. Each step is short, direct, and based on what works across home routers and access ...

Contact Us

For more information, pricing, or custom data center solutions, please contact us:

Website: <https://www.yoahorroenergia.es>

Email: hello@yoahorroenergia.es

Phone: +233 54 318 7269

Address: Plot 28, Spintex Road, Accra, Greater Accra, Ghana

This document is for informational purposes only. Specifications subject to change without notice.

