

Network Rack Configuration Design Requirements



Overview

Selecting the right rack requires evaluating its height (U), depth, width, weight capacity, airflow design, power integration (PDU/UPS/ATS), cable management strategy, and environmental monitoring options. From routers and switches to patch panels and UPS devices, understanding how to leverage rack-mountable solutions is key to optimizing your network's physical layout. What is a Networking Rack?

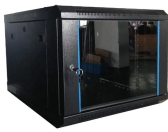
A networking rack, often referred to as an equipment rack, stands as a. When designing a data center, the first step is to choose the right type of rack for your particular use case. You want to organize your cables to maximize airflow and efficiently use the available space. You also want to properly label cables so that you know. Learn Cat6A requirements for Wi-Fi 7, PoE++ thermal management, SFP+ uplinks, and proper installation techniques for 10Gbps infrastructure. Modern network racks face new physical constraints: deeper switches, hotter PoE++ loads, and thicker Cat6A cabling. A standard 48-port PoE++ switch now. A cabinet or rack must belong to one of the following types: Standard 19-in. See Reference Perforated Cabinet. Standard two-post

telco rack, with mounting posts.

Network Rack Configuration Design Requirements



The experts at DataSpan have compiled important guidelines for server rack layouts and design. Contact us for more information on how to design server racks.



With our Server Rack Diagram Template, you can easily create a helpful guide on how to set up your rack. Follow the export and mount your network rack hardware accordingly.



Before starting with detailed planning, it is important to understand that effective server rack organization is not only about fitting equipment inside the rack, but also about ensuring ...



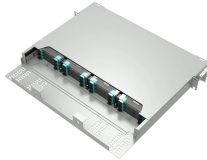
Learn Cat6A requirements for Wi-Fi 7, PoE++ thermal management, SFP+ uplinks, and proper installation techniques for 10Gbps infrastructure. ...



Standard two-post telco rack, with mounting posts that conform to English universal hole spacing per section 1 of ANSI/EIA-310-D-1992. The cabinet or rack must also meet the following requirements: ...



- PowerPass Distribution Module allows a step-down voltage to 120V to accommodate a variety of IT equipment. The PPDM also provides a maintenance bypass, which allows you to service or replace ...



This calculator helps you plan rack layouts by calculating the total rack units (U) needed for your equipment, including spacing for airflow and maintenance, ensuring efficient use of your data center ...



Learn Cat6A requirements for Wi-Fi 7, PoE++ thermal management, SFP+ uplinks, and proper installation techniques for 10Gbps infrastructure. Modern network racks face new physical ...



In the realm of network infrastructure, efficient organization and accessibility of devices are paramount. This ultimate guide delves into the world of networking racks, essential structures ...



Learn everything about data center server racks—definitions, rack types, airflow design, power integration, cable management, and a full buying guide for 2026.



Learn network & server rack setup best practices. Get tips for how to setup a server or network rack, how to layout your equipment, & enhance your configuration.

Contact Us

For more information, pricing, or custom data center solutions, please contact us:

Website: <https://www.yoahorroenergia.es>

Email: hello@yoahorroenergia.es

Phone: +233 54 318 7269

Address: Plot 28, Spintex Road, Accra, Greater Accra, Ghana

This document is for informational purposes only. Specifications subject to change without notice.

