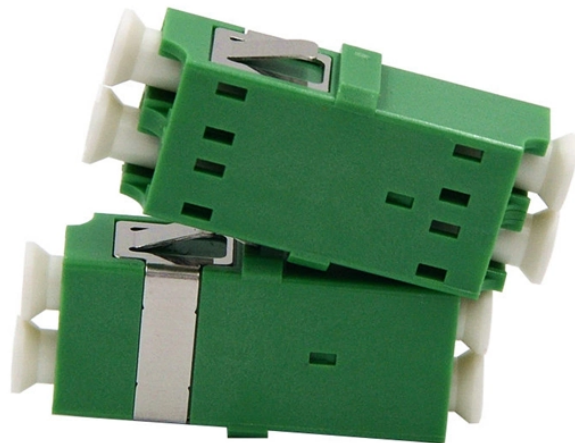


National Standards for Terminal Distribution Boxes



National Standards for Terminal Distribution Boxes



Overview NEC® Reference Article 314 of the National Electrical Code® covers the installation and use of boxes. The article includes table references that guide the electrician in the selection of the ...



You need to understand the main standards and codes that guide the safe design and use of low voltage distribution boxes. These rules help you meet ...



They are intended to support the distribution device, which is installed either in the factory or in the field. They may contain electrical termination points for underground wiring and for wiring to the distribution ...



It includes NEC Table 314.6 (A), which the minimum volume of that qualifies an enclosure to be a certain box trade size. It also shows the maximum number of conductors a given box trade size can legally ...



They are intended to support the distribution device, which is installed either in the factory or in the field. They may contain electrical termination points for underground wiring and for wiring to the distribution ...



NEC Article 314 establishes requirements for the installation and use of electrical boxes, conduit bodies, fittings, and handhole enclosures.



The Heart of Your Electrical System Think of your home's distribution box as the Grand Central Station of your electrical system. Just like travelers need clear pathways and safety protocols, your electrical ...



They are intended to support the distribution device, which is installed either in the factory or in the field.



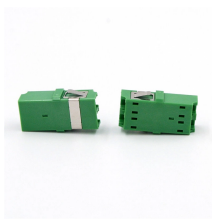
Complete specification guide for outdoor electrical distribution boxes covering NEC Article 312 requirements, NEMA ratings, sizing calculations, and selection criteria for commercial and ...



The standard is intended to reduce the risk of injury to consumers caused by contact, primarily of the foot and hand, with the rotating blade of the mower. Walk behind mowers are subject to certification ...



In this guide, you'll learn about the national electrical code in detail, ensuring safety and preventing electrical hazards for all electrical installations.



Section includes conduit, surface raceway, wireways, outlet boxes, pull boxes, junction boxes and handholes. All equipment must be supported directly by structural members with adequate load ...

Contact Us

For more information, pricing, or custom data center solutions, please contact us:

Website: <https://www.yoahorroenergia.es>

Email: hello@yoahorroenergia.es

Phone: +233 54 318 7269

Address: Plot 28, Spintex Road, Accra, Greater Accra, Ghana

This document is for informational purposes only. Specifications subject to change without notice.

