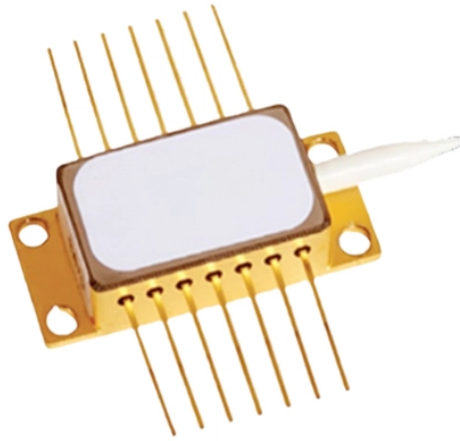


# National Standard for Fireproof Cable Trays



## National Standard for Fireproof Cable Trays



Cable trays and busways at floor level or at slab penetrations shall have a waterstop no less than 50 mm in height. At slab penetrations, provide ...



This guide explains the critical steps in fireproof cable trays acceptance, covering coating processes, inspection standards, and more. By following these steps, you can enhance durability ...



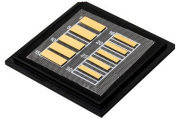
NEMA FG 1 - This standard specifies the manufacturing requirements for nonmetallic (fiberglass) cable trays (such as; ladder cable tray trough or ventilated cable tray, solid bottom or nonventillated cable ...



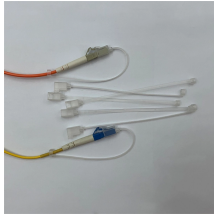
The purpose of this standard is to establish a test protocol and performance criteria to determine the flame propagation tendency of cables in a vertical cable tray.



NFPA 70 - National Electrical Code; National Fire Protection Association; Most Recent Edition Adopted by Authority Having Jurisdiction, Including All Applicable Amendments and ...



Cable trays and busways at floor level or at slab penetrations shall have a waterstop no less than 50 mm in height. At slab penetrations, provide 20-30 mm of firestopping and install a fire ...



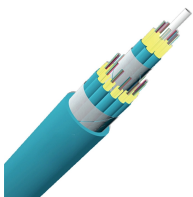
NEMA Standard VE 2-2006 addresses shipping, handling, storing, and installing cable tray systems; it also provides information on cable tray maintenance and system modification.



In-depth guide to cable trays, focusing on NEC Article 392. Covers types, selection, installation, and safety standards for electrical systems.



These trays are designed to maintain electrical circuit integrity during a fire, protecting both life and property. However, to get the full benefits, installations must meet recognized ...



Master NEC Article 392 with our comprehensive guide. Learn essential cable tray requirements for installation, grounding, and fill capacity to ensure full electrical compliance.



It provides rules for acceptable wiring methods that can be installed in cable trays, including conditions for use. It addresses uses permitted and not permitted for cable trays.

## Contact Us

For more information, pricing, or custom data center solutions, please contact us:

Website: <https://www.yoahorroenergia.es>

Email: [hello@yoahorroenergia.es](mailto:hello@yoahorroenergia.es)

Phone: +233 54 318 7269

Address: Plot 28, Spintex Road, Accra, Greater Accra, Ghana

This document is for informational purposes only. Specifications subject to change without notice.

