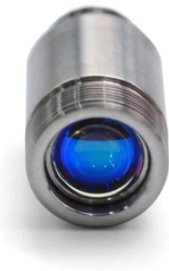


# **Model of Low-voltage Enclosed Busbar**



## Model of Low-voltage Enclosed Busbar



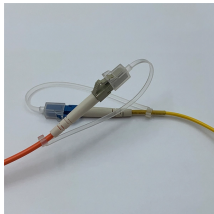
ABB Z-busbar offering is available for 400A, 630A, 1600A and 2500A, to be used either as TN-C or as TN-S with a protected N-bar. The Z-busbar system is used with InLine XLBM and ZLBM and it has a ...



Before we get into how busbar offers the same benefits as IEC devices within a control panel, it is important to understand what a busbar system is and how they are used today.



Our busbar systems for electrical installations offer a particularly easy way of fitting distribution systems with electrotechnical components. The modular design saves space, while quick assembly contacts ...



Show fabrication and installation details for enclosed bus assemblies. Include plans, elevations, and sections of components. Designate components and accessories, including clamps, brackets, ...



This standard covers busbars used for low-voltage assemblies, power distribution, photovoltaic power systems, and electrical energy control. The IEC 61439 busbar standard also ...



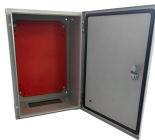
This guide explains horizontal and vertical busbar design, current density logic, IEC and North American standards, and how E-abel builds reliable electrical enclosure solutions for modern ...



All of these early designs used separated, uninsulated busbars inside a totally enclosed or perforated steel housing. In 1951, low impedance feeder busway was introduced as the first design to use heat ...



Power-Zone™ metal-enclosed, non-segregated phase medium and low voltage bus systems are custom-designed and manufactured.



Low voltage busbars come in various types, each suited for unique applications. Electrical manufacturers commonly utilize insulated busbars, which provide additional safety by preventing ...



A low-voltage Enclosed busbar system uses conductive bars (instead of individual cables) to deliver power to devices within switchgear and control cabinets. GRL's Low-Voltage ...



The Pow-R-Way III 200% neutral is manufactured with a single 0.50-inch (12.7 mm) thick bus bar, which receives the same silver-plating and Class B, 130°C Epoxy insulation as the phase bars.

## Contact Us

For more information, pricing, or custom data center solutions, please contact us:

Website: <https://www.yoahorroenergia.es>

Email: [hello@yoahorroenergia.es](mailto:hello@yoahorroenergia.es)

Phone: +233 54 318 7269

Address: Plot 28, Spintex Road, Accra, Greater Accra, Ghana

This document is for informational purposes only. Specifications subject to change without notice.

